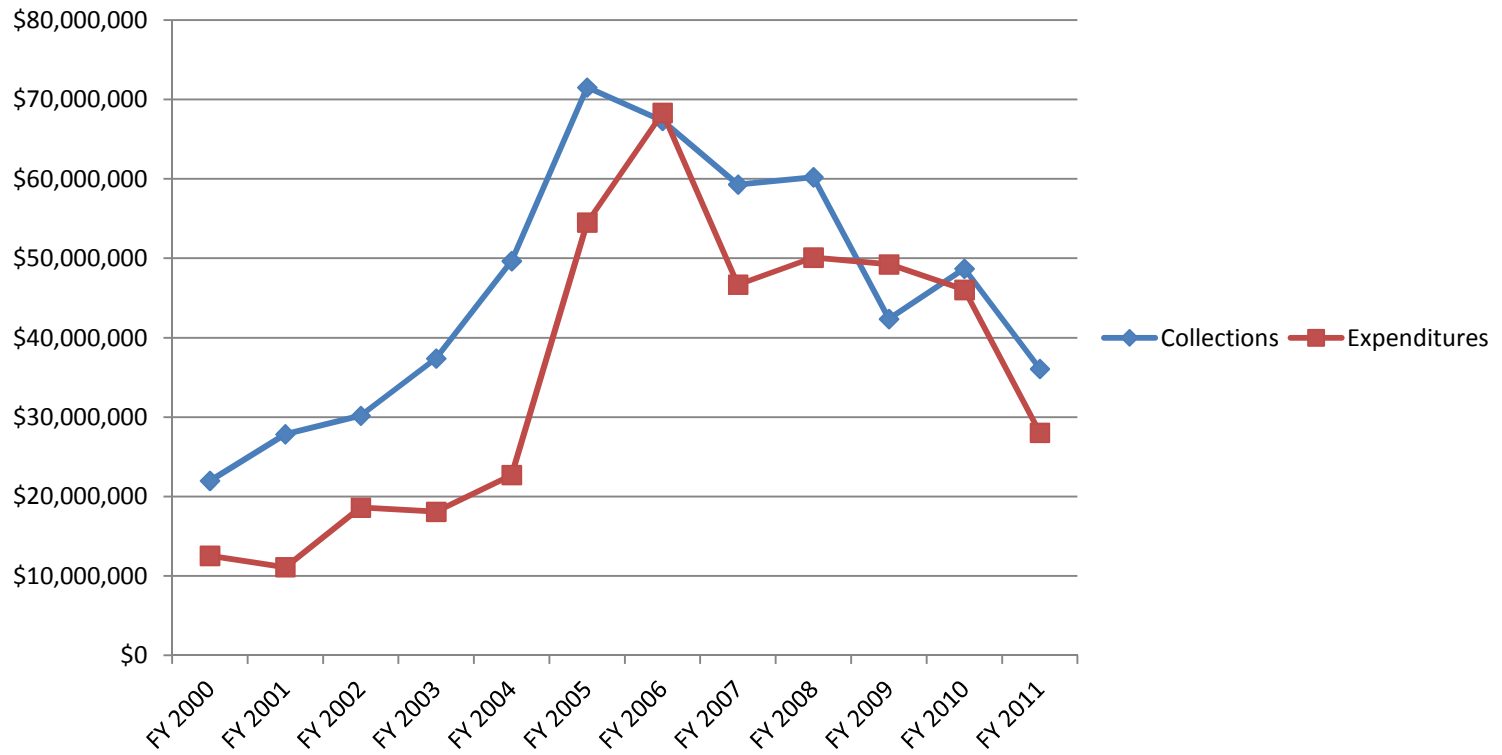
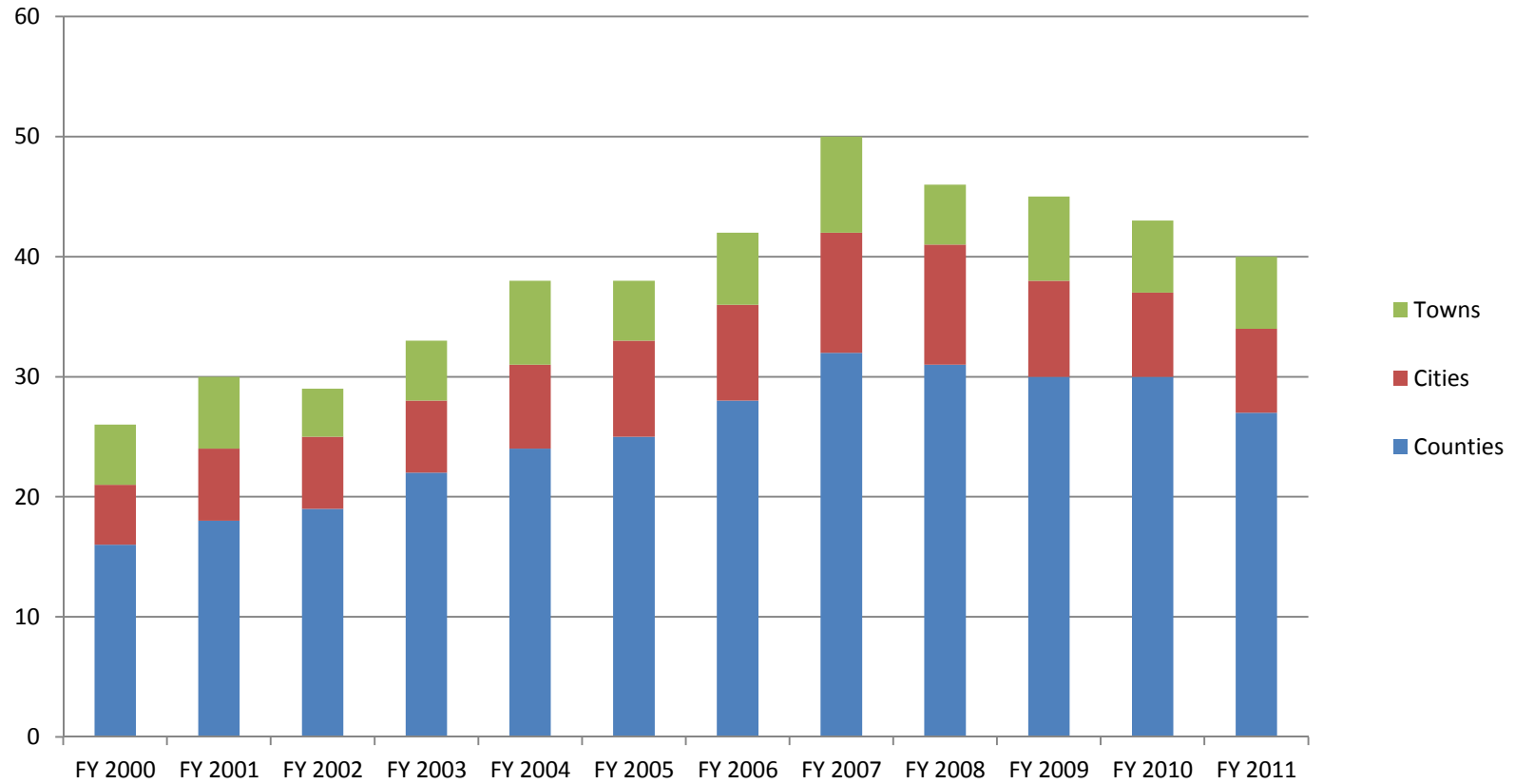


Year	FY 2000	FY 2001	FY 2002	FY 2003	FY 2004	FY 2005	FY 2006	FY 2007	FY 2008	FY 2009	FY 2010	FY 2011
Collections	\$21,984,130	\$27,843,520	\$30,171,650	\$37,384,315	\$49,657,678	\$71,508,482	\$67,302,128	\$59,293,502	\$60,199,278	\$42,354,973	\$48,690,384	\$36,066,019
Expenditures	\$12,537,967	\$11,110,104	\$18,611,790	\$18,085,540	\$22,711,255	\$54,500,952	\$68,314,130	\$46,682,184	\$50,103,054	\$49,233,663	\$46,019,644	\$28,031,345
Counties	16	18	19	22	24	25	28	32	31	30	30	27
Cities	5	6	6	6	7	8	8	10	10	8	7	7
Towns	5	6	4	5	7	5	6	8	5	7	6	6
Schools				\$7,557,283	\$8,123,781	\$18,024,288	\$21,102,473	\$23,074,437	\$18,075,597	\$22,385,305	\$13,455,415	\$9,049,914
Roads				\$4,540,185	\$10,767,162	\$23,622,510	\$23,899,316	\$11,268,323	\$13,805,293	\$12,840,128	\$13,328,247	\$11,392,992
Public Safety				\$1,652,781	\$1,827,575	\$1,734,777	\$4,704,114	\$2,152,474	\$6,272,375	\$4,386,871	\$6,287,624	\$815,921
Libraries				\$0	\$370,222	\$682,272	\$739,643	\$1,154,299	\$2,918,830	\$2,115,351	\$729,340	\$366,676
Parks & Recreation				\$2,454,920	\$803,180	\$6,440,635	\$5,901,126	\$5,514,905	\$4,362,196	\$5,268,317	\$6,101,412	\$3,866,331
Water/Sewer Extensions				\$21,000	\$73,000	\$254,717	\$429,459	\$750,221	\$545,217	\$308,788	\$196,269	\$1,275,912
Community Centers				\$0	\$0	\$0	\$0	\$0	\$0	\$832,800	\$68,526	\$0
Stormwater Management				\$145,000	\$0	\$152,682	\$272,737	\$298,523	\$102,904	\$161,240	\$0	\$571,872
Special Needs Housing				\$1,503,762	\$81,275	\$480,796	\$3,533,615	\$739,749	\$1,246,645	\$350,142	\$124,252	\$198,000
Affordable Housing				\$196,495	\$626,887	\$1,457,209	\$7,289,489	\$1,353,840	\$2,006,554	\$445,683	\$4,854,812	\$188,914
Miscellaneous				\$14,114	\$38,173	\$1,651,066	\$442,158	\$375,413	\$767,443	\$139,038	\$873,748	\$304,814
Note: The FY 2007 collections total reflects the correction of Loudoun County's collections figure on 8/4/08 to \$13,449,612 from \$22,514,192. The change decreases the reported FY 2007 total from \$68,358,082 to \$59,293,502.												
Note: Data for expenditures by category was not collected in FY 2000-2002.												
Note: Due to a data entry error on the part of the Commission's staff, Loudoun County's FY 2006 cash proffer expenditures were reported as \$13,291,918. The correct figure is \$13,921,918. This correction increases the 2006 figure for total expenditures in the state from \$67,684,130 to \$68,314,130.												

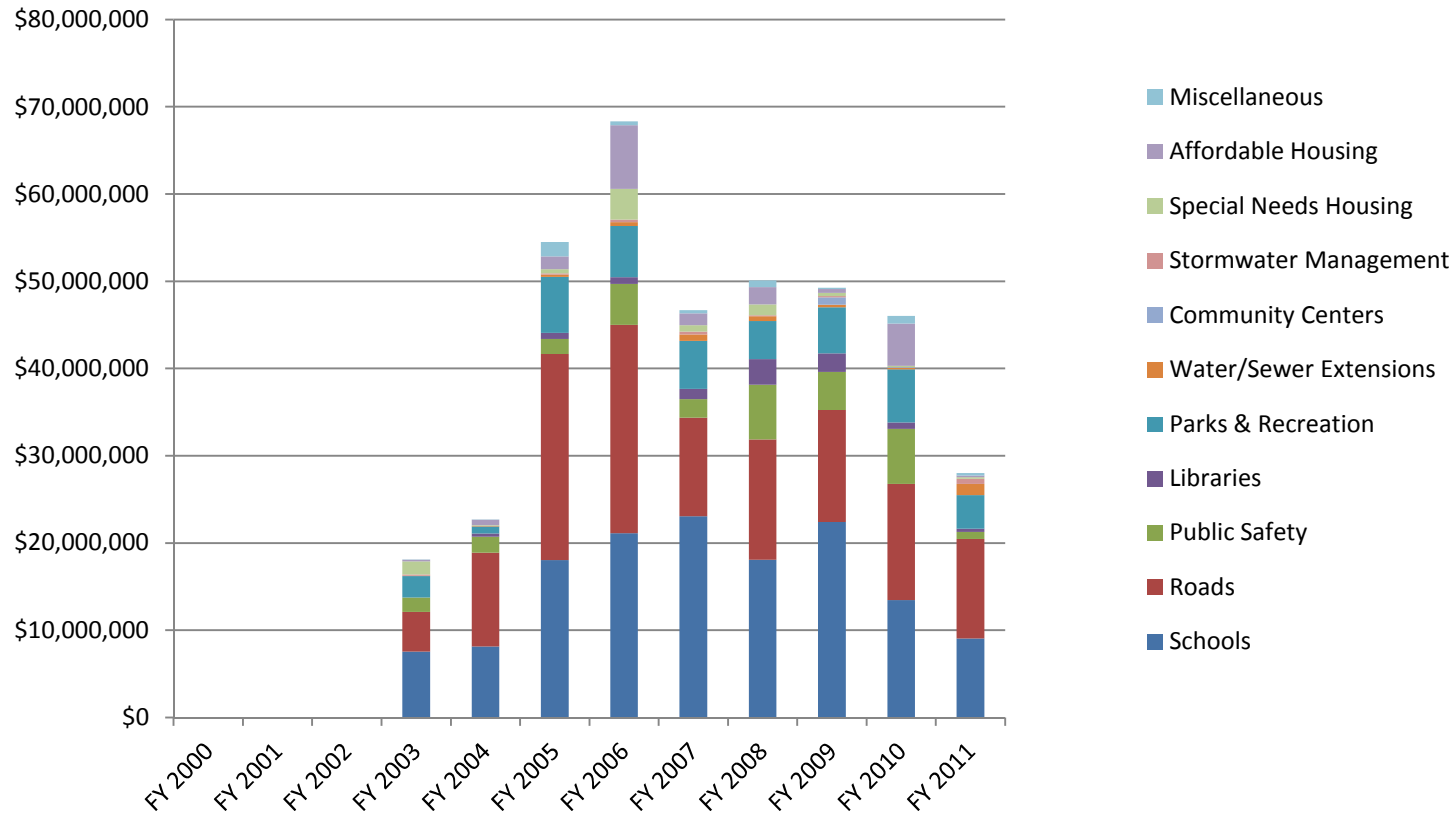
Cash Proffer Collections and Expenditures, FYs 2000-2011



Localities Reporting Cash Proffer Activity, FYs 2000-2011



Cash Proffer Expenditures by Category, FYs 2003-2011



Note: Data for cash proffer expenditures by category was not collected in FY's 2000-2002.