



BOUNDLESS ENERGY™

Legal Department

American Electric Power  
1051 E Cary Street, Suite 1100  
Richmond, Virginia 23219  
AEP.com

July 29, 2021

By email to [broadband@dhcd.virgini.gov](mailto:broadband@dhcd.virgini.gov)

Erik Johnston  
Director, Virginia Department of Housing and Community Development  
600 East Main Street, Suite 300  
Richmond, VA 23219

Noelle J. Coates  
Senior Counsel - Regulatory  
Services  
(804) 698-5541 (P)  
(804) 698-5526 (F)  
[njcoates@aep.com](mailto:njcoates@aep.com)

Dear Mr. Johnston,

Attached please find Appalachian Power Company's (APCo) Petition requesting that a proposed project area within the Counties of Bland, Pulaski and Montgomery, Virginia, be designated by the Department of Housing and Community Development (DHCD) as "unserved by broadband" as that term is defined in Section 56-585.1:9 of the Virginia Code. APCo is pleased to be part of a solution that has the potential to bring economic development and other benefits of modern Internet service to portions of the three counties that are currently unserved by broadband.

APCo looks forward to working with the DHCD during its review process. Please let me know if you have any questions.

Sincerely,

A handwritten signature in black ink, appearing to be "Noelle J. Coates", written over a horizontal line.

Noelle J. Coates

cc: Brad Hall, Vice President of External Affairs, Appalachian Power Company  
Evan Feinman, Chief Broadband Advisor to the Governor of the  
Commonwealth of Virginia

**PETITION OF APPALACHIAN POWER COMPANY  
BEFORE THE VIRGINIA DEPARTMENT OF HOUSING  
AND COMMUNITY DEVELOPMENT FOR  
DESIGNATION OF PROPOSED PROJECT AREA AS UNSERVED BY BROADBAND**

Comes now Appalachian Power Company (APCo or Petitioner), and respectfully requests that the Virginia Department of Housing and Community Development (DHCD), pursuant to its May 28, 2021 Utility Leverage Program--Unserved Certification Guidelines (Guidelines), designate the proposed project area that is the subject of this Petition as “unserved by broadband.” In support of this request, the Petitioner states as follows:

1. The purpose of the proposed APCo-Bland/Pulaski/Montgomery Rural Broadband Project, which APCo will submit to the Virginia State Corporation Commission for approval before it can proceed, is to install middle-mile broadband infrastructure for the Virginia Counties of Bland, Pulaski and Montgomery. A portion of that middle-mile broadband infrastructure would be leased to and used by GigaBeam Networks LLC (GigaBeam) and Everywhere Virginia, LLC, and its affiliates (d/b/a/ All Points Broadband) (All Points) to bring last-mile broadband internet service to areas in those counties that are “unserved by broadband” as that term is defined in Section 56-585.1:9 of the Virginia Code.

2. The proposed project area, which is depicted in the polygon and point shapefiles submitted in electronic format attached to this Petition as Exhibits 1 and 2, consists of all areas within the respective county boundaries where less than 10% of the residential and commercial units are capable of receiving broadband service at speeds of at least 25 Megabits per second (Mbps) download and 3 Mbps upload (25/3 Mbps), in accordance with Virginia law. The boundaries of the proposed project area were determined based upon information contained in the following two reports, both prepared by Thompson & Litton and Blue Ridge Advisory

Services (County Consultants), at the request of Bland and Pulaski Counties, and Montgomery County, respectively: the June 29, 2021 Broadband Assessment, Bland and Pulaski Counties, Virginia; and the Updated June 29, 2021 Supplemental Broadband Study, Montgomery County, Virginia. Copies of these reports are attached as Exhibits 3 and 4, respectively. These reports, in conjunction with the attached polygon and point shapefiles, depict the geographic area of the proposed project area, its specific boundaries, and the addresses of each structure, as a singular mapped point, that will be capable of receiving service from either GigaBeam or All Points, as a result of APCo's proposed middle-mile broadband infrastructure project (*i.e.* each "passing," as defined in the Guidelines). A further written description of the proposed project area, by county, is attached as Exhibit 5.

3. APCo would note that the information in the County Consultants' reports was prepared for the Counties. Consequently, such things as the costs and the proposed network routes depicted in the reports do not represent the costs or routes of APCo's proposed middle-mile broadband infrastructure project.

4. Existing Internet Service Providers (ISPs) in Bland, Pulaski and Montgomery Counties are listed in the County Consultants' reports. Those reports describe the outreach efforts (*i.e.* surveys) that were used to identify existing ISPs and to avoid overlap.

5. The survey results set out in the County Consultants' reports were compiled by performing targeted interviews of knowledgeable officials in all three Counties and by conducting broadband customer surveys in all three counties. The results of these surveys were validated through discussions with county administrators and their staffs.

6. APCo represents that its middle-mile broadband infrastructure will be capable of supporting future terabit deployment speeds. GigaBeam has advised APCo that, in conjunction

with APCo's middle-mile broadband infrastructure project, its proposed 10 Gigabit Symmetrical— Passive Optical Network (XGS-PON) would be capable of up to 10 Gigabits per second (Gbps) symmetrical speeds. It expects its initial Internet service packages in the proposed project area to be from 100 Mbps to 10 Gbps symmetrical speeds. In conjunction with APCo's proposed middle-mile broadband infrastructure project, All Points has advised APCo that it expects to initially offer Internet customers symmetrical speeds of 100 Mbps from its proposed XGS-PON, which is expected to be upgradable to 10 Gbps symmetrical speeds.

WHEREFORE, for the reasons contained in this Petition, and as a first step to bring modern Internet service to the portions of Bland, Pulaski and Montgomery Counties that are currently unserved by broadband, APCo respectfully requests that the DHCD, after following the process contained in its Guidelines, designate the proposed project "unserved by broadband."

Respectfully submitted,

APPALACHIAN POWER COMPANY

By: 

Noelle J. Coates (VSB #73578)  
AMERICAN ELECTRIC POWER SERVICE CORPORATION  
1051 East Cary Street, Suite 1100  
Richmond, Virginia 23219  
804-698-5541  
njcoates@aep.com

*Counsel for Appalachian Power Company*





# Broadband Assessment Bland and Pulaski Counties, Virginia

## Final Report

June 29, 2021



# Project Objectives & Scope of Work

© All Rights Reserved 2021

- Objectives
  - To accurately identify the unserved communities in Bland and Pulaski counties
    - Anything less than 25 X 3 MBPS
    - Include reliability measures, where possible
  - To produce unimpeachable results in the event our findings are challenged before the State Corporate Commission
- Scope of Work
  - Diagnostic Interviews with County Leaders and Key Stakeholders
  - Online Survey and Data Collection
  - List of unserved communities, areas
  - Infrastructure assessment
  - Broadband plan

# Project Recap

© All Rights Reserved 2021

County	Diagnostic Interviews	Online Responses	Households	Response Rate	No. of Invalid or Duplicate Responses	Mappable Responses
Bland	6	667	3,356	20%	140	527
Pulaski	8	679	17,302	4%	63	616

# Bland County

# Key Findings – Bland County

© All Rights Reserved 2021

- Every community in Bland County appears to have pocket areas that are considered unserved (less than 25 X 3)
  - Coverage is “decent” around the interstate but, outside of that, pockets of unserved. Mountainous terrain poses a challenge.
- Workarounds show high level of need
  - Hot spots are critical to most (if they can get it)
    - Gigabeam placed Wifi hotspots in the community centers and parks for students (Holly Brook Community Center, fairground, pavilion)
    - Libraries have increased tech training to accommodate increased computer and hot spot usage
    - Schools increased wifi hotspots in parking lots
- Employees and students cannot work/learn from home -- especially critical during the pandemic
  - The IT Director of the school system has no internet
  - Fiber to the schools is expensive (Point Broadband)
- Residents of the County are adapting to doing everything virtually (banking, learning, etc.) but want to do it in the comfort of their home, not in a public space (especially during a pandemic)

# Infrastructure Assessment – Bland County

© All Rights Reserved 2021

- Existing Broadband Infrastructure
  - I-77 Corridor (Rocky Gap, Bastian, Bland)
    - Segra, Windstream, LIT Network
  - Rt. 42 (from Smyth County to Bland)
    - LIT Networks (Backhaul only)
  - GigaBeam
    - Hollybrook area
    - Eastern side of county
  - DSL/Satellite Service
    - CenturyLink, Verizon, HughesNet

# Unserved\* – Bland County

© All Rights Reserved 2021

Unserved Communities - Bland County
Bastian
Bland
Ceres
Clear Fork
Dry Fork
Grapefield
Hollybrook
Laurel
Little Creek
Rocky Gap

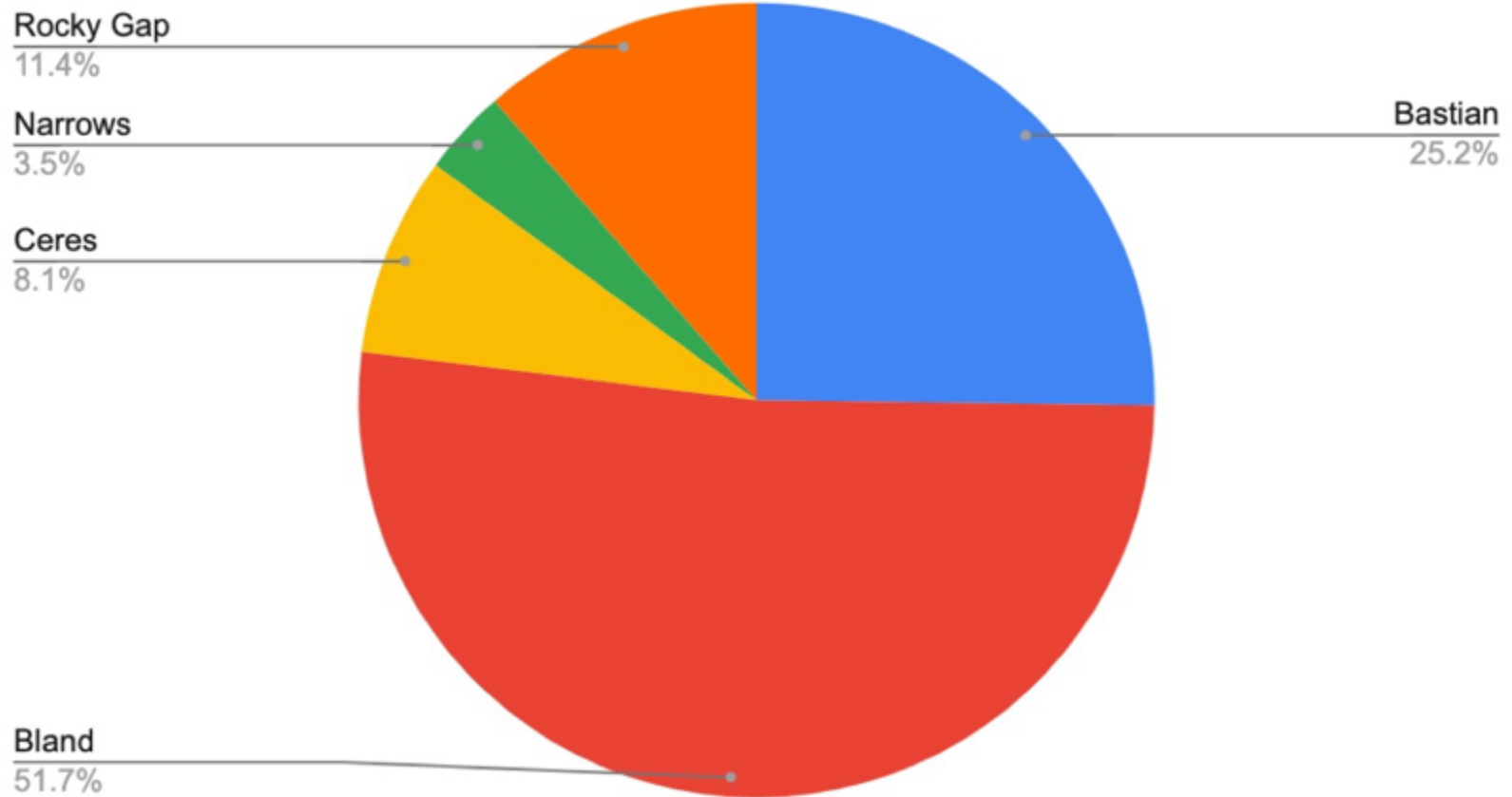
Unserved - Other - Bland County
Appalachian Trail (Trailheads)
Business Parks
Campgrounds (Camp Rowland)
Holly Brook Community Center
Wolf Creek Indian Village (Bastian)

***\*Source: Diagnostic Interviews***



# Online Survey – Bland County

© All Rights Reserved 2021

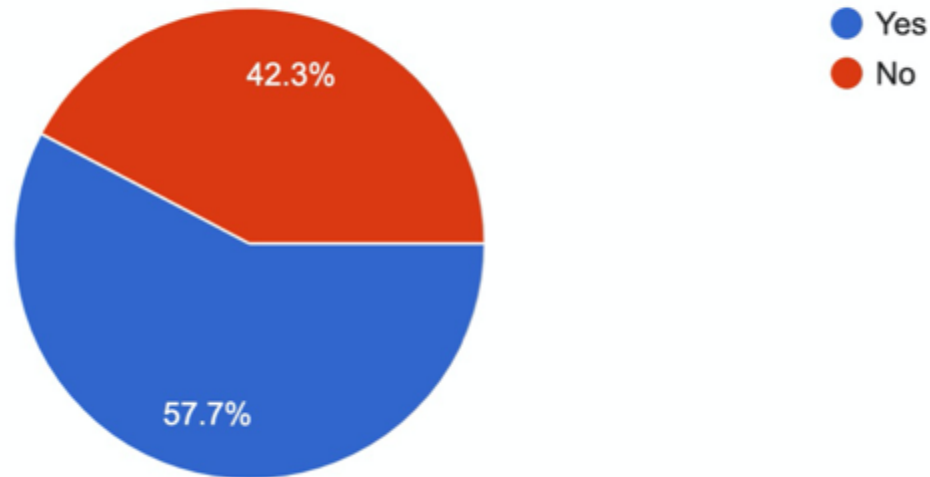


# Online Survey – Bland County

© All Rights Reserved 2021

2. Is there a student currently living at this address?

667 responses



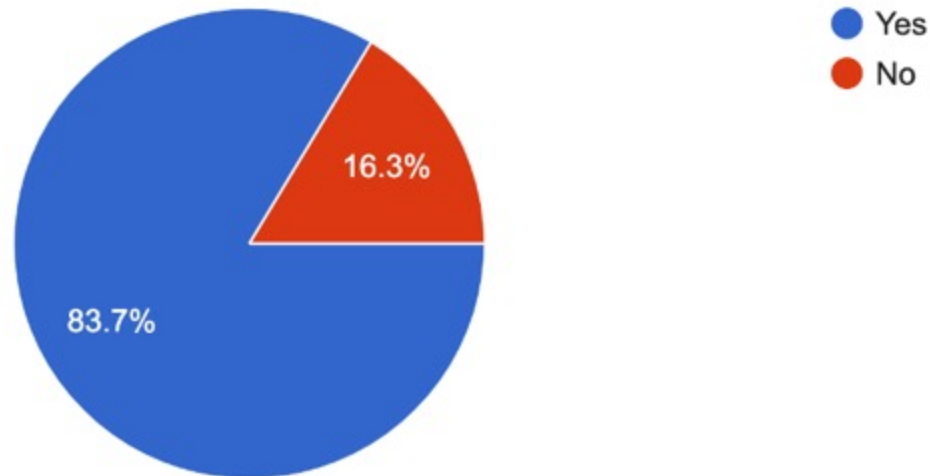
***58% have students living at home***

# Online Survey – Bland County

© All Rights Reserved 2021

3. Do you currently have Internet service at this address?

667 responses



***16% have no Internet service***

# Online Survey – Bland County

© All Rights Reserved 2021

4. If "No", what is the main reason why you do not have Internet service at this address?

141 responses



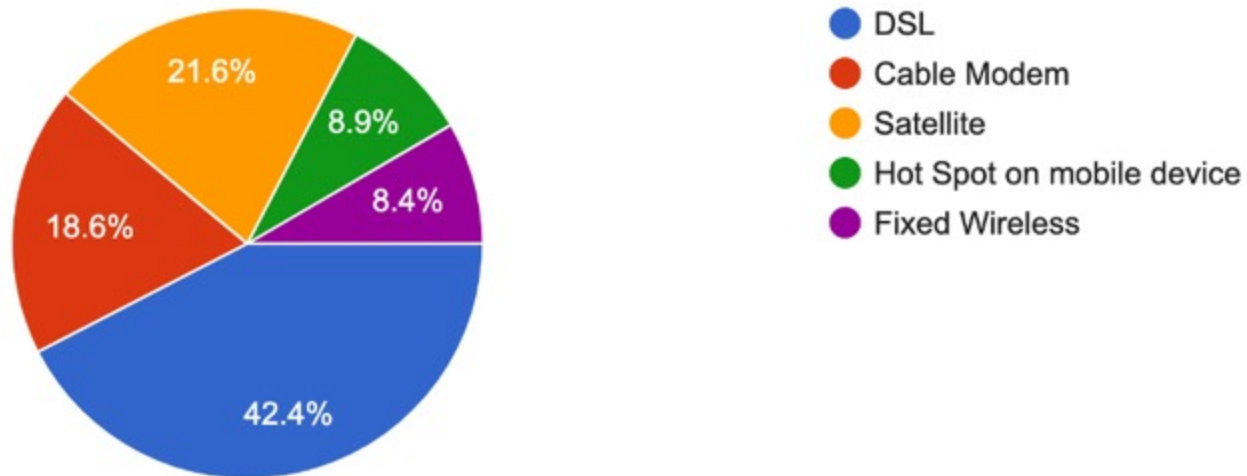
***Availability is the biggest factor***

# Online Survey – Bland County

© All Rights Reserved 2021

5. If "Yes", what type of Internet service do you have?

559 responses



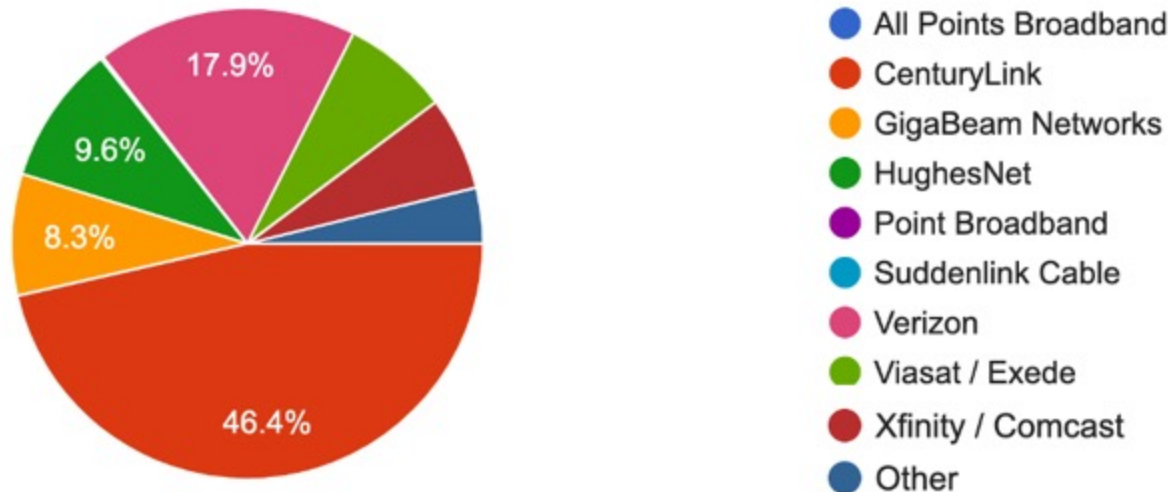
***64% have DSL and Satellite = Unserved***

# Online Survey – Bland County

© All Rights Reserved 2021

## 6. Who is your Internet service provider?

575 responses



**64% have CenturyLink and Verizon**  
**17% have Satellite = 80%**

# Online Survey – Bland County

© All Rights Reserved 2021

7. What is the approximate speed of your household's Internet service? If you are not sure, go to [www.speedtest.net](http://www.speedtest.net) from your home laptop or computer.

566 responses



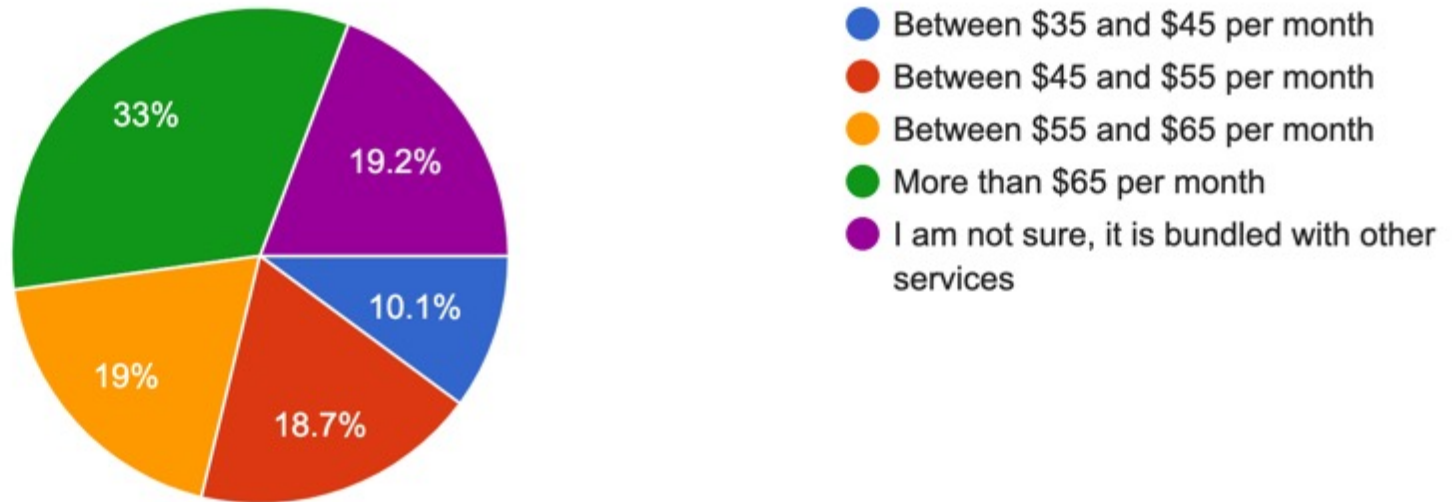
***61% have speeds considered unserved***

# Online Survey – Bland County

© All Rights Reserved 2021

## 8. How much do you pay monthly for Internet service?

573 responses



***33% pay on the higher end***

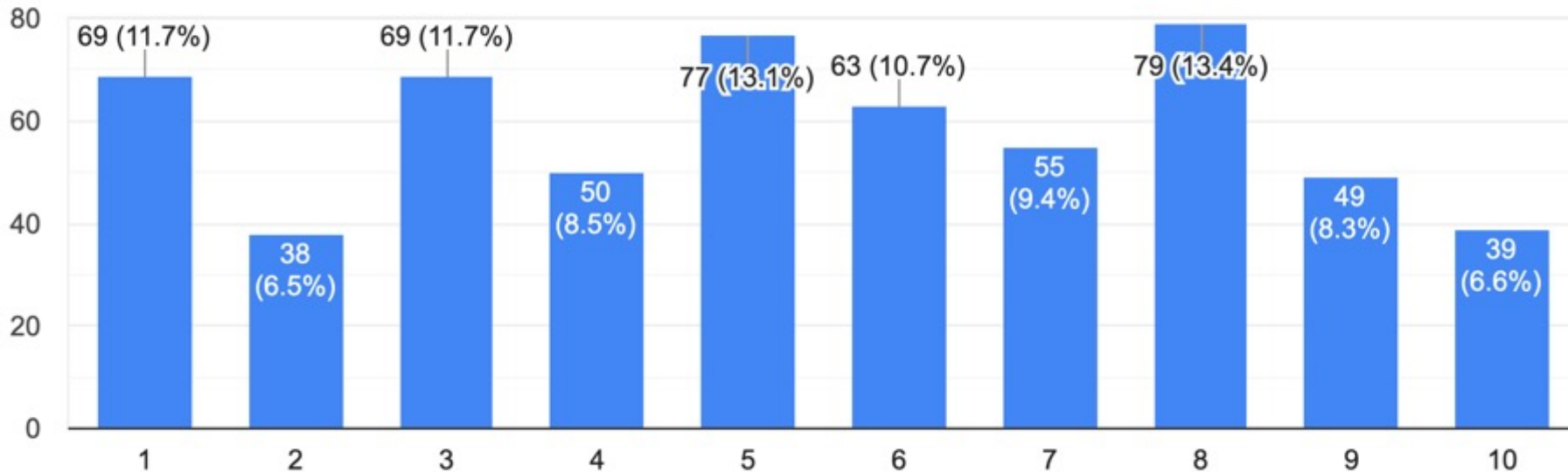


# Online Survey – Bland County

© All Rights Reserved 2021

9. How reliable is your Internet service (1 being "Completely Unreliable and 10 being "Very Reliable")?

588 responses



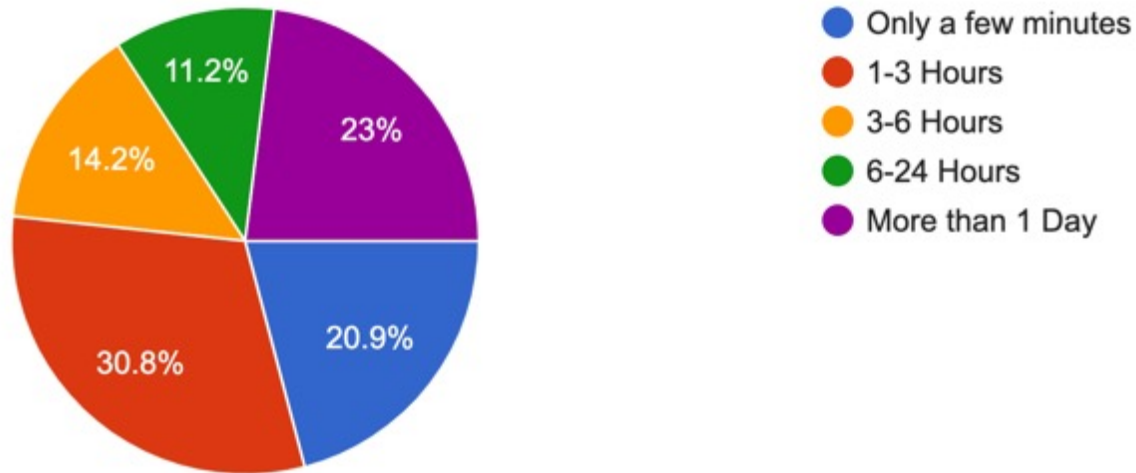
***51% fall at or below the mid range of reliability***

# Online Survey – Bland County

© All Rights Reserved 2021

10. On average, how long does a typical Internet service outages last?

565 responses



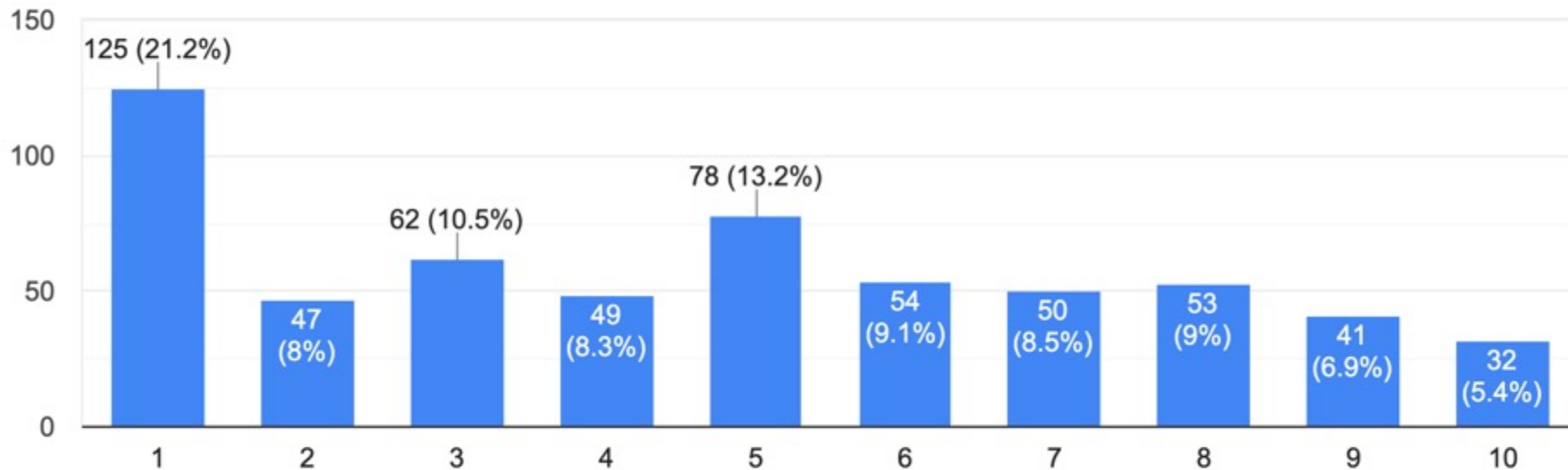
***23% of outages last more than 1 day***

# Online Survey – Bland County

© All Rights Reserved 2021

11. Generally, how satisfied are you with your Internet service (1 being "Completely Dissatisfied and 10 being "Very Satisfied")?

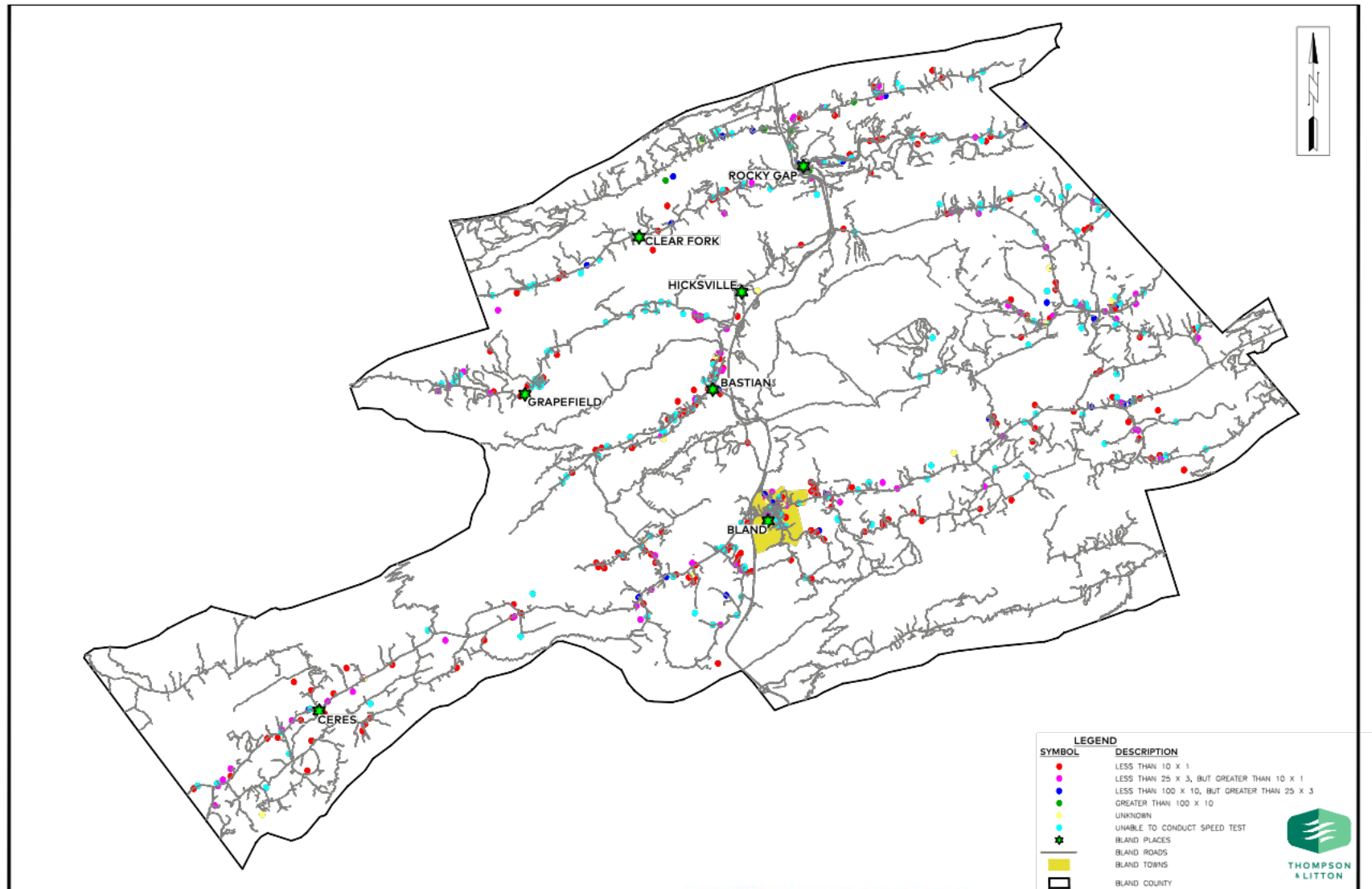
591 responses



***61% fall at or below the mid range of general satisfaction***

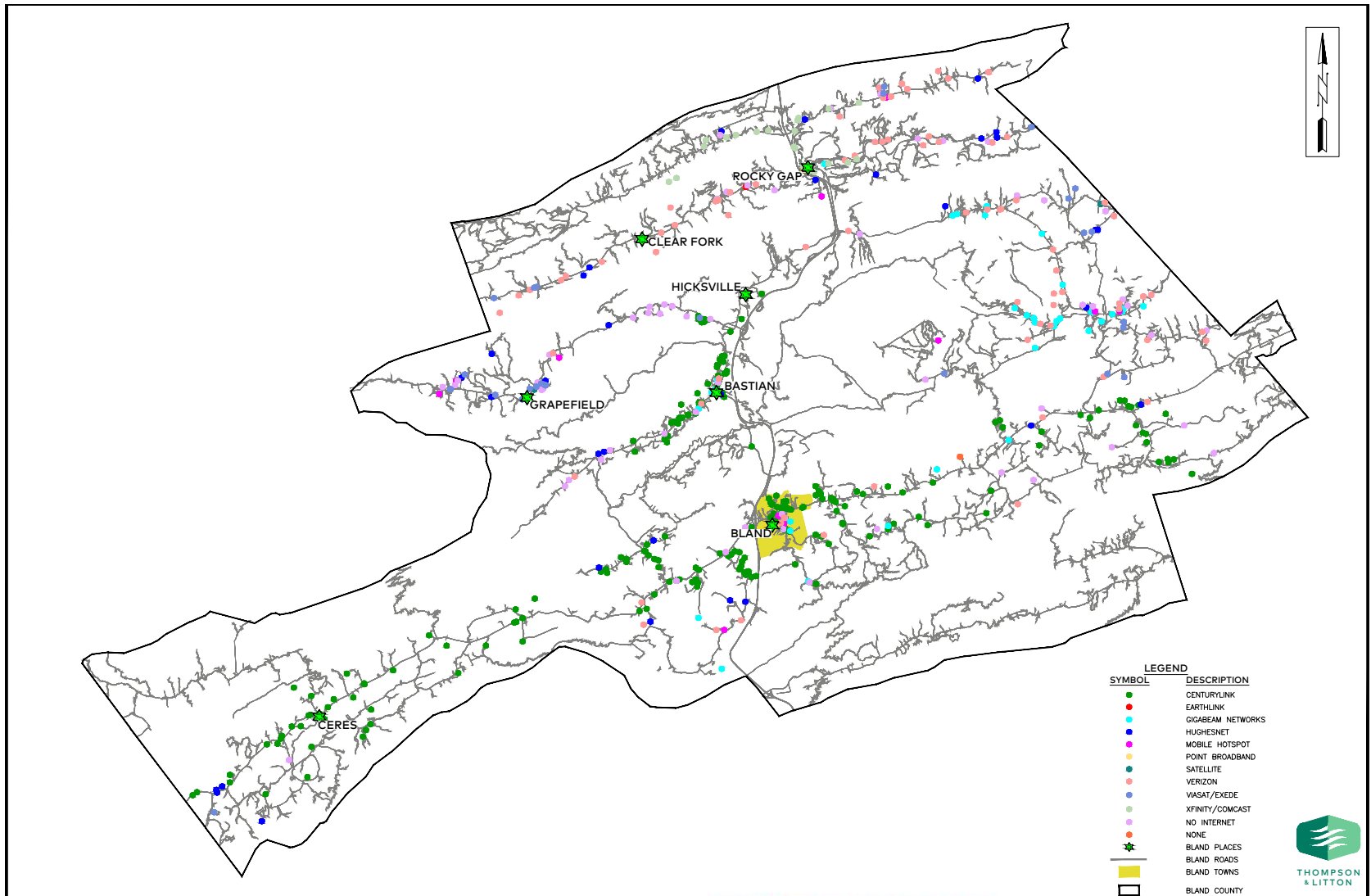
# Bland County Survey – By Speed

© All Rights Reserved 2021



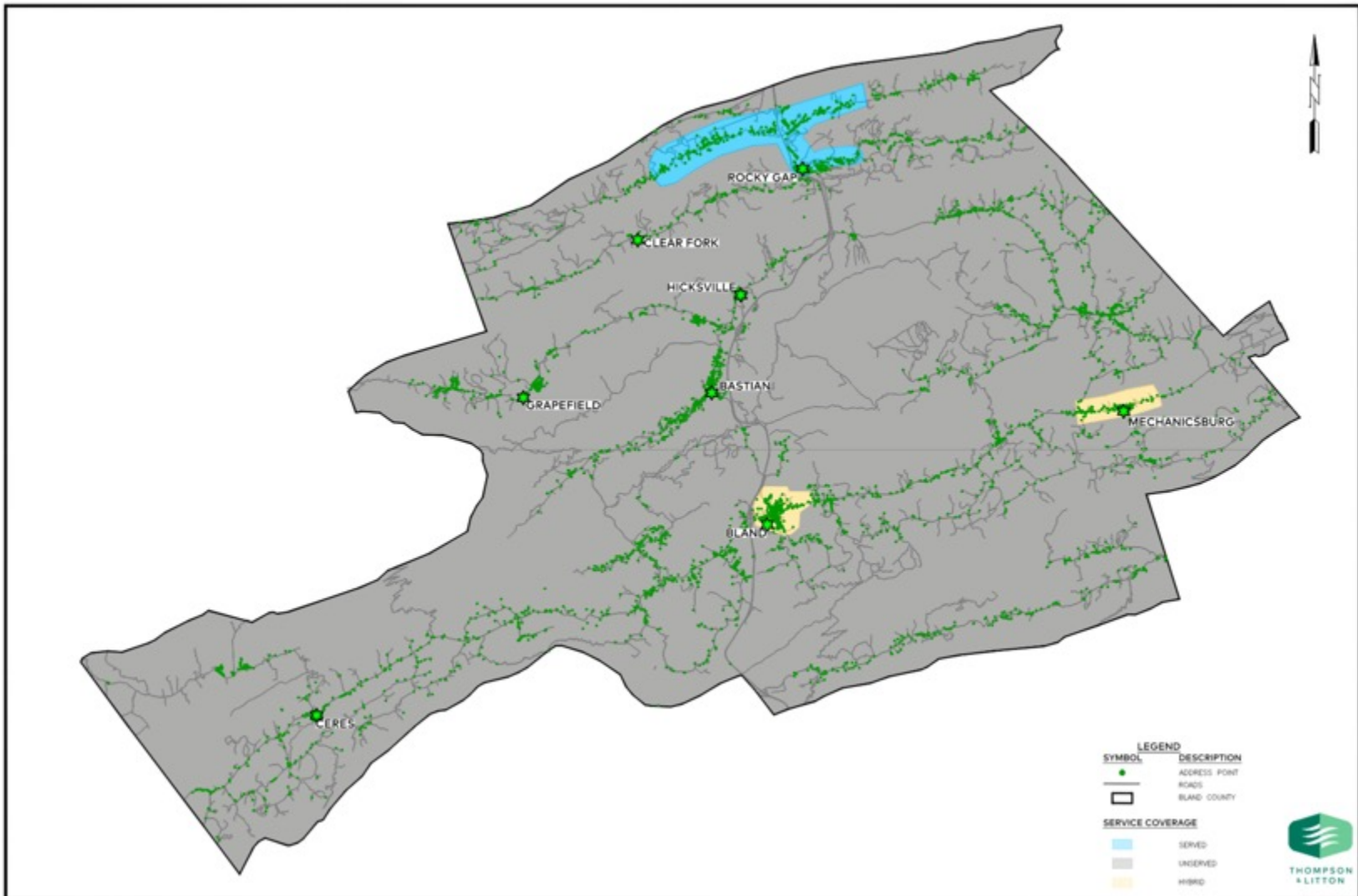
# Bland County Survey – By Provider

© All Rights Reserved 2021



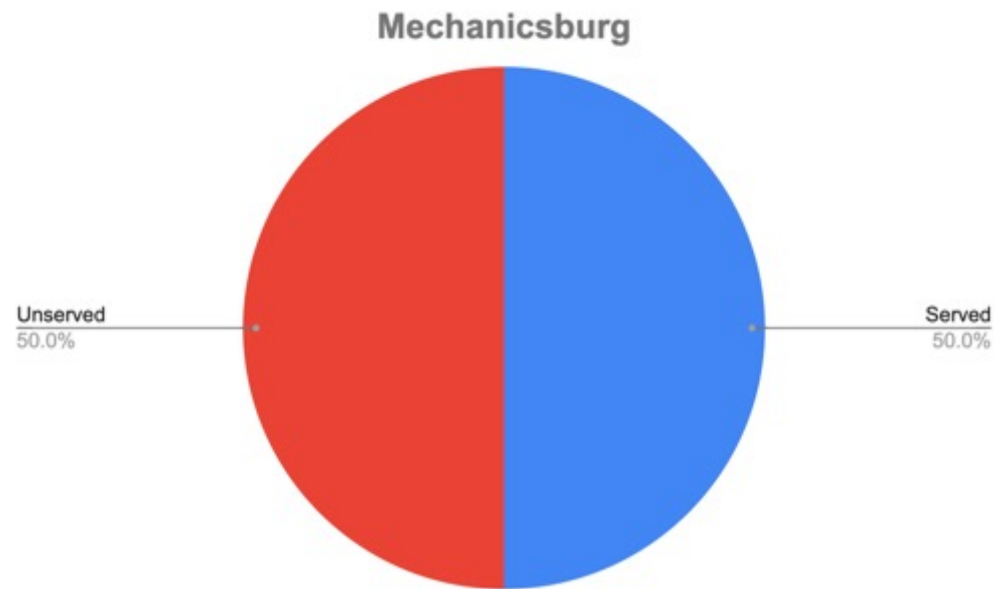
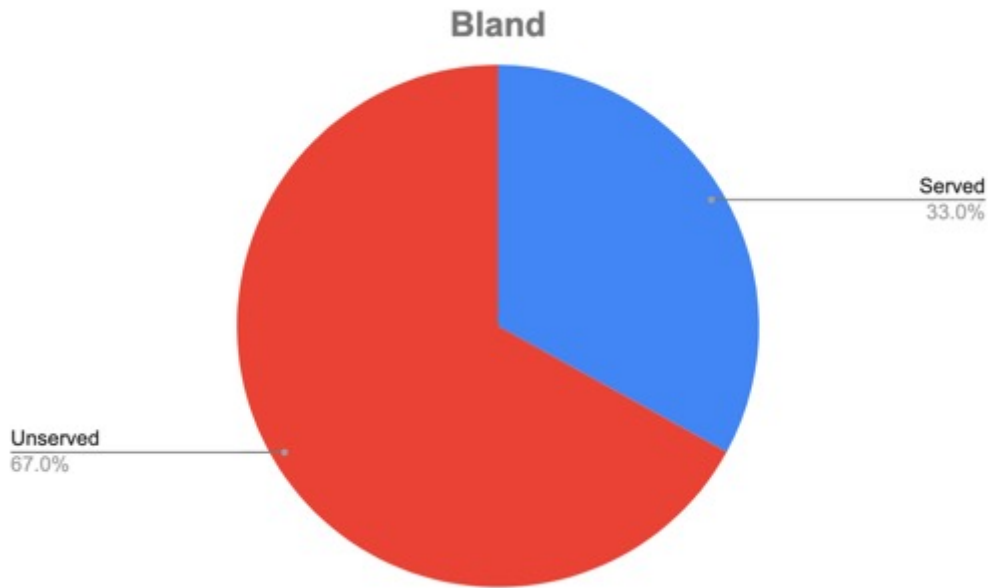
# Bland County Survey – By Service

© All Rights Reserved 2021



# Hybrid Areas – Bland County

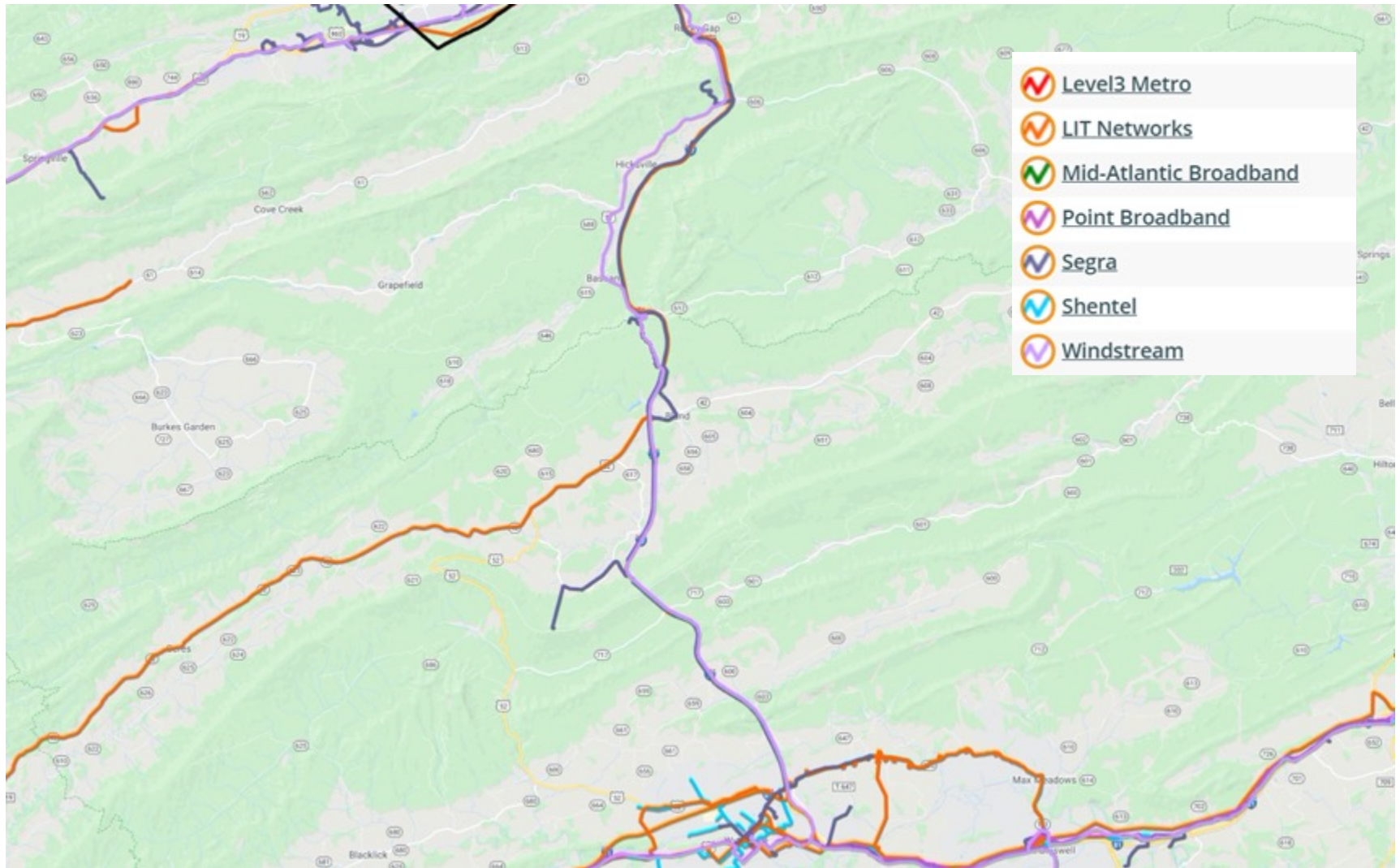
© All Rights Reserved 2021





# Fiber - Bland County

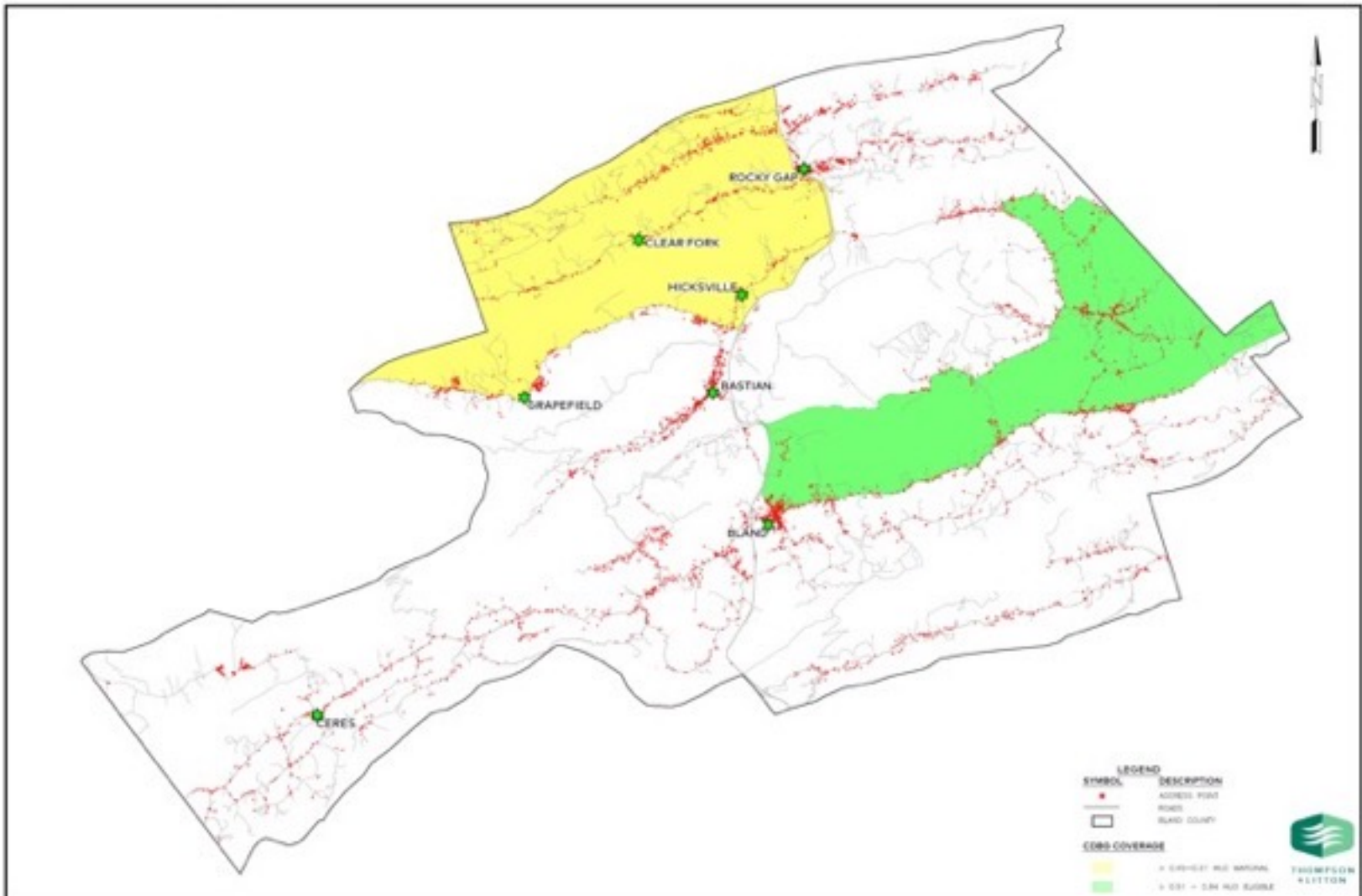
© All Rights Reserved 2021





# Bland County CDBG HUD Map

© All Rights Reserved 2021



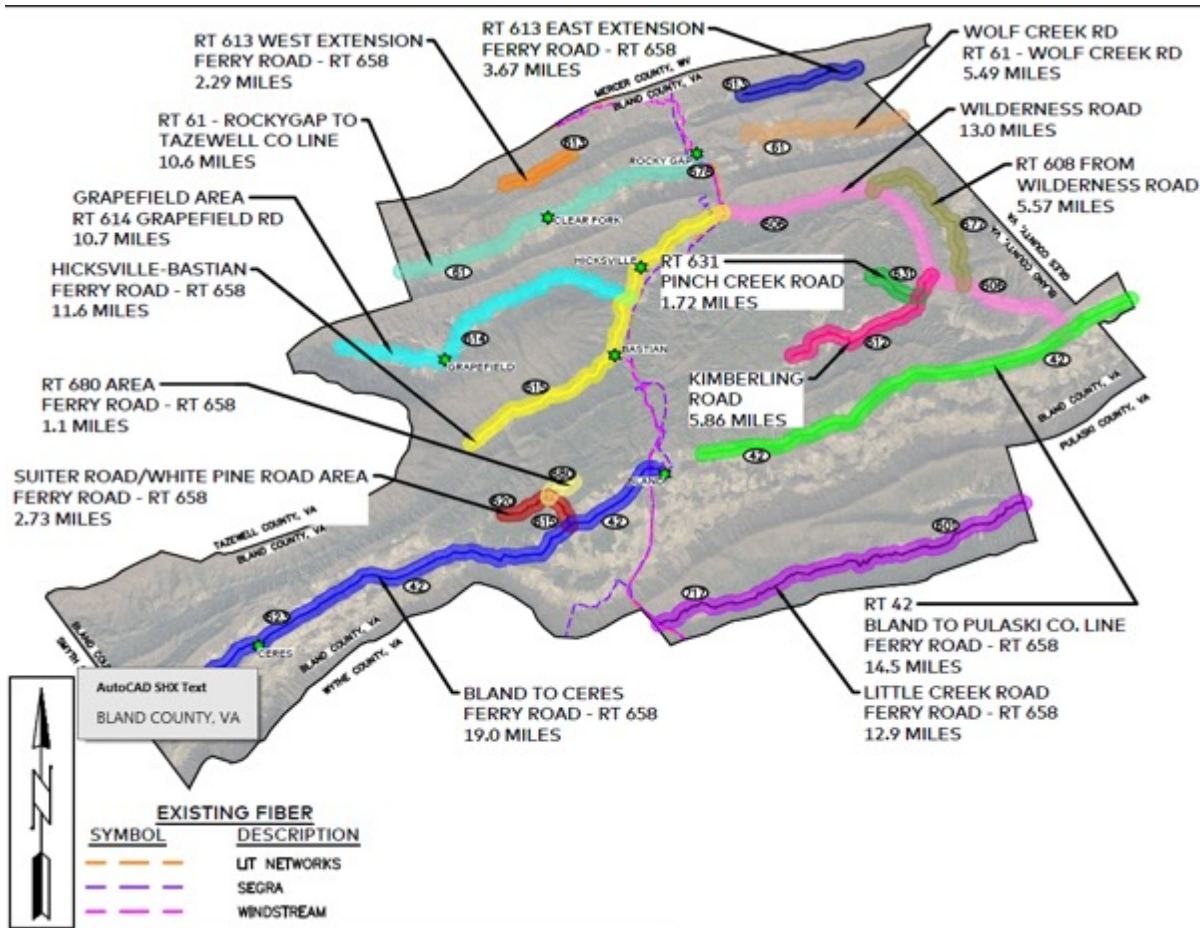
# Bland County CAFII/RDOF Map

© All Rights Reserved 2021



# Bland County Proposed Project Map

© All Rights Reserved 2021



PROJECT AREA	HUD MARGINAL HOUSES	HUD ELIGIBLE	NON-CDBG HOUSES IN PROJECT AREA	TOTAL HOUSES
BAND TO CERES	---	---	329	329
GRAPEFIELD	85	---	138	223
HICKSVILLE-BASTIAN	49	---	347	396
KIMBERLING ROAD	---	16	43	59
LITTLE CREEK ROAD	---	---	136	136
RT42-BLAND TO PULASKI CO. LINE	---	111	141	252
WILDERNESS ROAD	1	116	101	218
WOLF CREEK ROAD	---	---	---	83
RT 608 FROM WILDERNESS ROAD	---	50	22	72
RT 61 - ROCKY GAP TO TAZEWELL CO. LINE	121	---	58	179
RT 613 EAST EXTENSION	---	---	73	73
RT 613 WEST EXTENSION	48	---	---	48
RT 631 PINCH CREEK ROAD	---	---	---	39
RT 680 AREA	---	---	---	57
SUITER ROAD/WHITE PINE ROAD AREA	---	---	---	74



# Bland County Proposed Project Costs

© All Rights Reserved 2021

PROPOSED BROADBAND PROJECTS					
County	Community	Length (miles)	EST Number of Households/ Connections	Estimated Project Costs	
				Aerial	
				Preliminary Statement of Probable Project Cost - Aerial (See Project Cost Estimates)	Aerial Cost per Connection
Bland	RT 61 - Rocky Gap to Tazewell Co. Line	10.6	179	\$1,119,874	\$6,256
Bland	RT 61 - Wolf Creek Road	5.5	83	\$641,492	\$7,729
Bland	RT 608 (From Wilderness Road)	5.6	72	\$642,737	\$8,927
Bland	RT 613 - East Extension	3.7	73	\$513,466	\$7,034
Bland	RT 613 - West Extension	2.3	48	\$391,636	\$8,159
Bland	RT 631 - Pinch Creek Road	1.7	39	\$338,500	\$8,679
Bland	RT 615 - Suiter Road/White Pine Road Area	3.8	131	\$600,304	\$4,582
Bland	RT 42 - Bland to Ceres	19.0	329	\$1,835,845	\$5,580
Bland	RT 42 - Bland to Pulaski Co. Line	14.5	252	\$1,463,926	\$5,809
Bland	RT 614 - Grapefield	10.7	223	\$1,140,130	\$5,113
Bland	RT52/RT 615 - Hicksville/Bastian	11.6	396	\$1,439,751	\$3,636
Bland	RT 612 - Kimberling Road	5.9	59	\$634,879	\$10,761
Bland	RT 601 - Little Creek Road	12.9	136	\$1,219,908	\$8,970
Bland	RT 606 - Wilderness Road	13.0	218	\$1,315,561	\$6,035
		120.8	2238	\$13,298,009	

# Pulaski County

# Key Findings – Pulaski County

© All Rights Reserved 2021

- Many in the county are disenfranchised because they lack broadband availability
  - Work from home mandates pose a challenge to some residents
  - Students relying on wifi hotspots at school parking lots, community centers, and parks
- Goal to grow the county's population - 40K by 2030
  - Housing and Broadband are major initiatives with parks and services helping to drive the demand; providing free hotspots to unserved areas such as community parks
  - Real estate is a valuable resource that is considered undervalued because of lack of broadband
    - Homes for sale go quickly where they have broadband
- Everything south of the lake along the river - including Hiwasee, Snowville and Allisonia - have no dependable broadband
  - Professors, retirees, and grandparents unable to connect

# Unserved\* – Pulaski County

© All Rights Reserved 2021

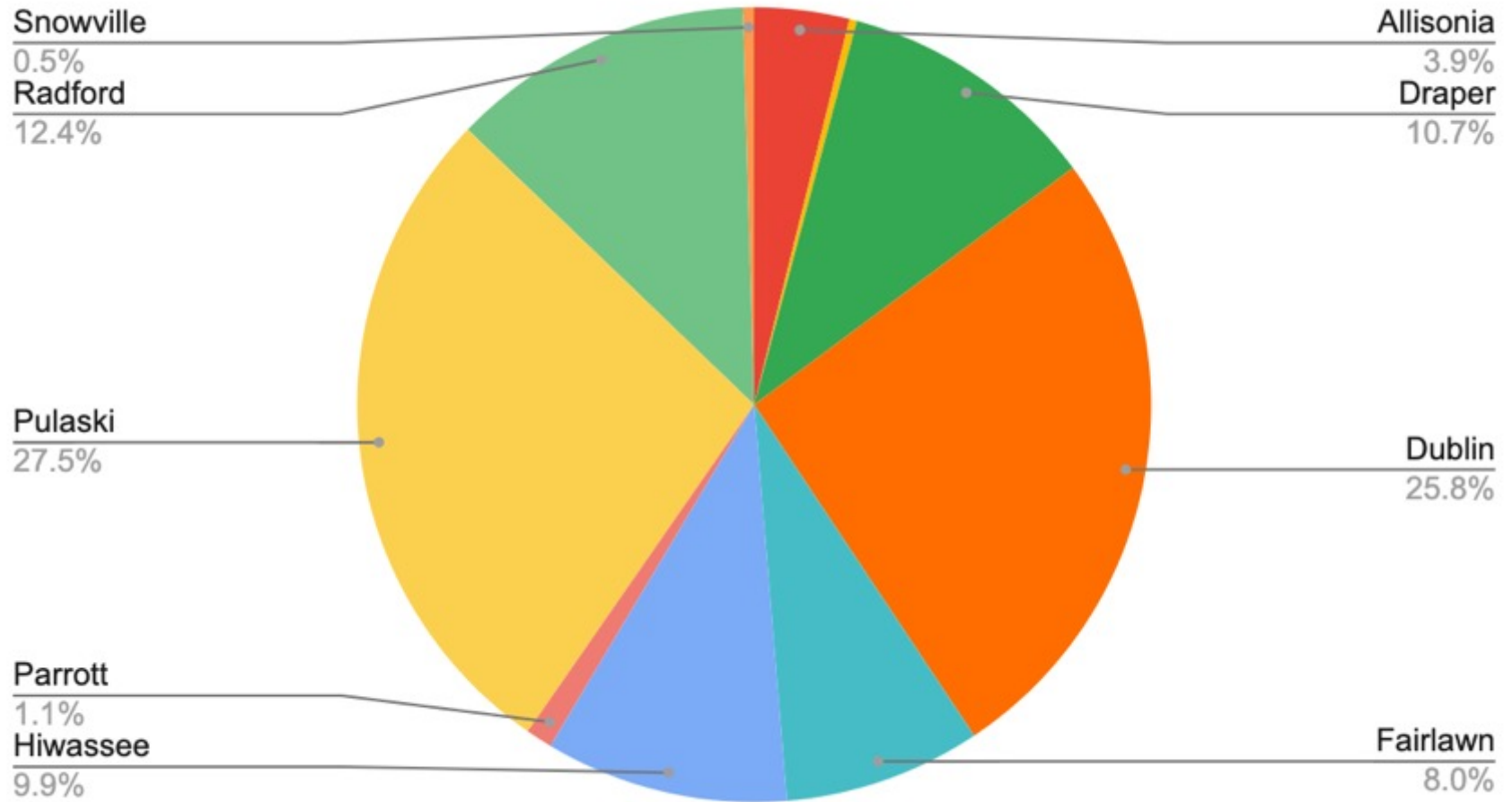
Unserved Communities - Pulaski County
Allisonia
Belspring
Caseknife
Delton
Draper
Dublin
Fairlawn
Hiwassee
Little Creek
Mount Olivet
New River
Newbern
Parrott
Pulaski
Robinson Tract
Snowville

Unserved - Other Areas - Pulaski County
Business Parks
Camp Ottari
Camp Powhatan
Claytor Lake State Park
Commerce Park
Draper Valley Golf Course
Parks
Pulaski County Industrial Park
Trailheads

***\*Source: Diagnostic Interviews***

# Addresses – Pulaski County

© All Rights Reserved 2021



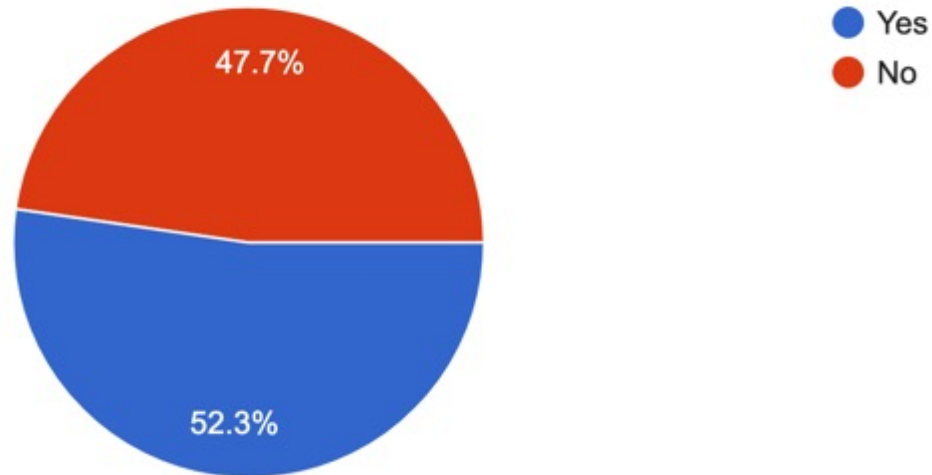


# Online Survey – Pulaski County

© All Rights Reserved 2021

2. Is there a student currently living at this address?

679 responses



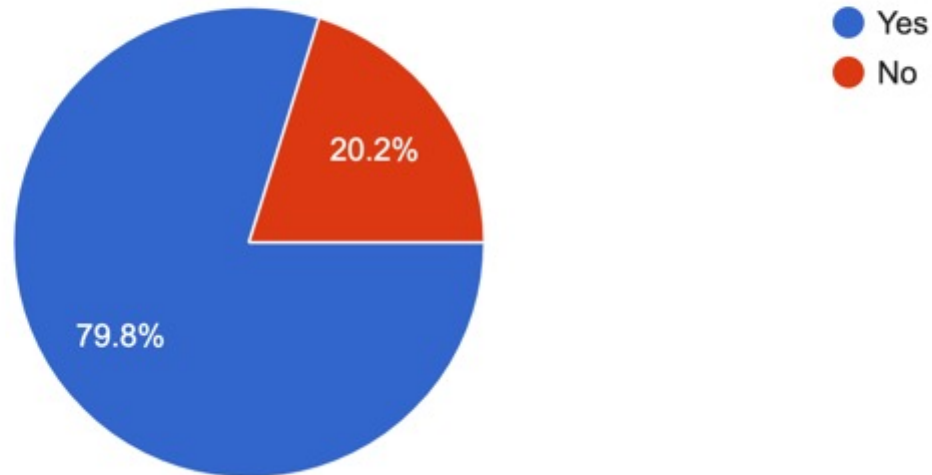
***52% have students living at home***

# Online Survey – Pulaski County

© All Rights Reserved 2021

3. Do you currently have Internet service at this address?

679 responses



***20% have no Internet service***

# Online Survey – Pulaski County

© All Rights Reserved 2021

4. If "No", what is the main reason why you do not have Internet service at this address?

165 responses



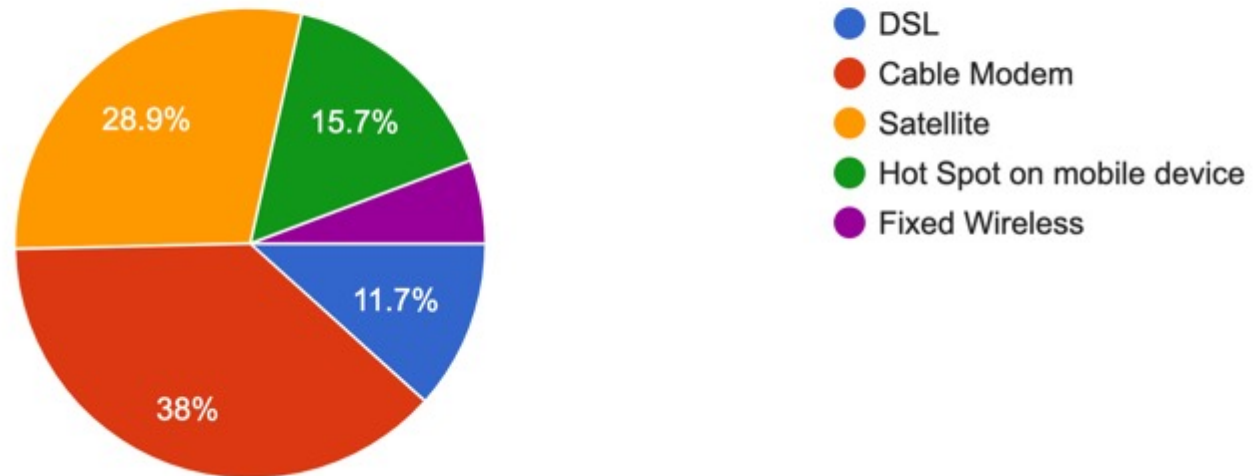
***Availability is the biggest factor***

# Online Survey – Pulaski County

© All Rights Reserved 2021

5. If "Yes", what type of Internet service do you have?

540 responses



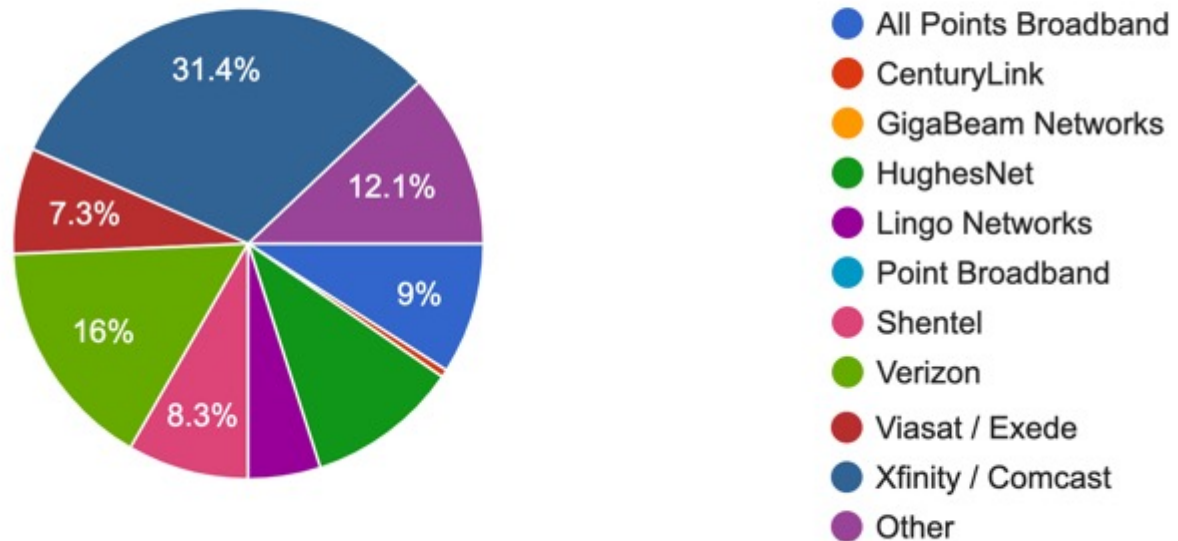
***55% use DSL and Satellite & Hot Spot = Unserved***

# Online Survey – Pulaski County

© All Rights Reserved 2021

## 6. Who is your Internet service provider?

564 responses



# Online Survey – Pulaski County

© All Rights Reserved 2021

7. What is the approximate speed of your household's Internet service? If you are not sure, go to [www.speedtest.net](http://www.speedtest.net) from your home laptop or computer.

566 responses



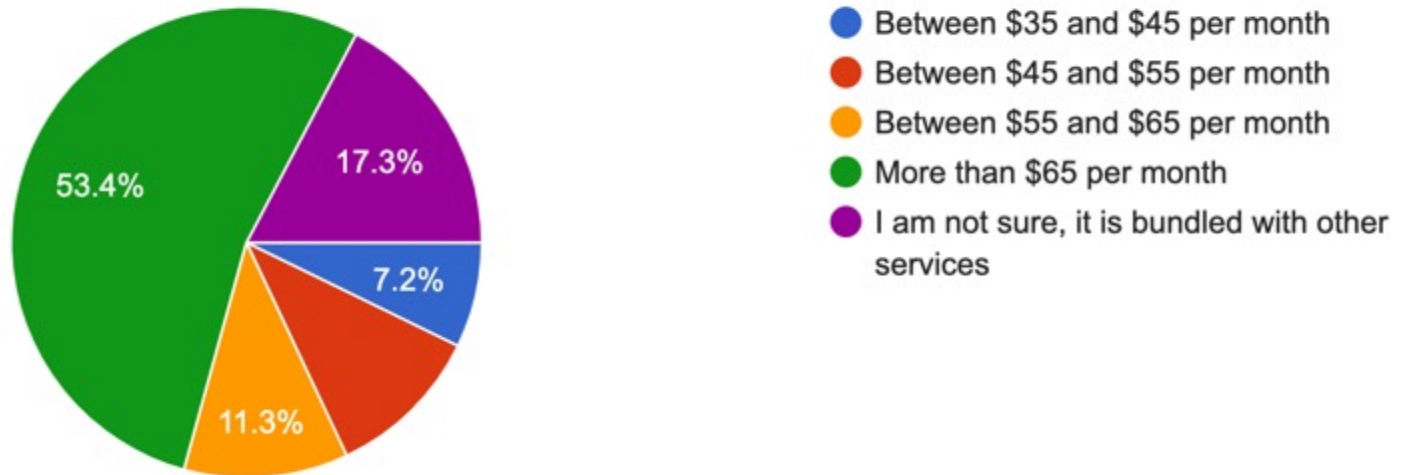
***45% have speeds considered unserved***

# Online Survey – Pulaski County

© All Rights Reserved 2021

## 8. How much do you pay monthly for Internet service?

567 responses



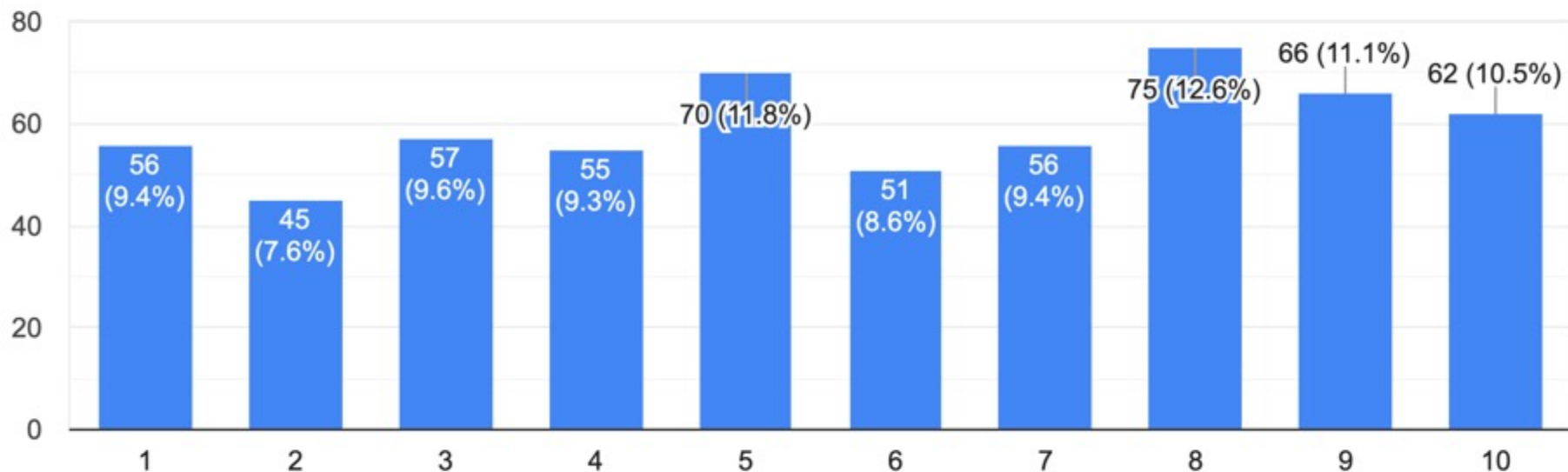
***53% pay on the higher end***

# Online Survey – Pulaski County

© All Rights Reserved 2021

9. How reliable is your Internet service (1 being "Completely Unreliable and 10 being "Very Reliable")?

593 responses



***60% fall at or below the mid range of reliability***

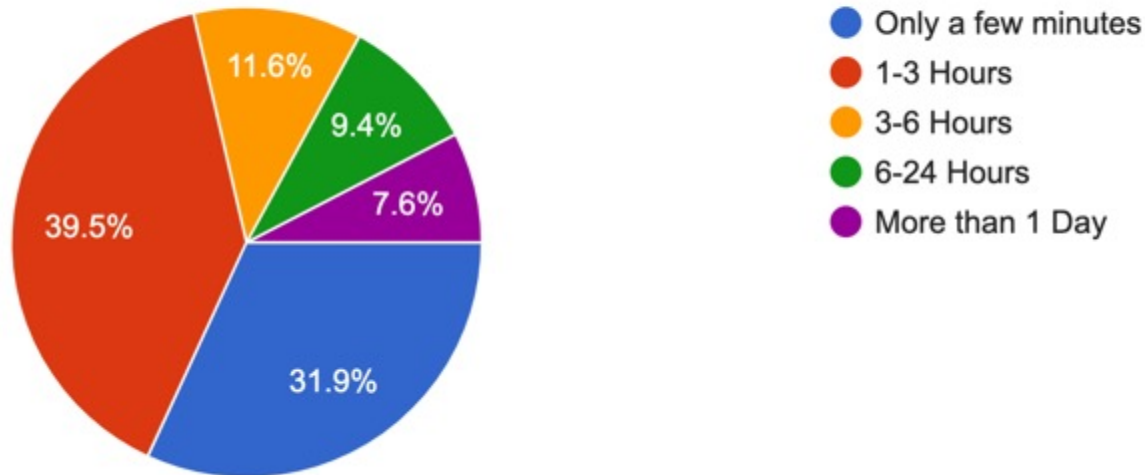


# Online Survey – Pulaski County

© All Rights Reserved 2021

10. On average, how long does a typical Internet service outages last?

552 responses



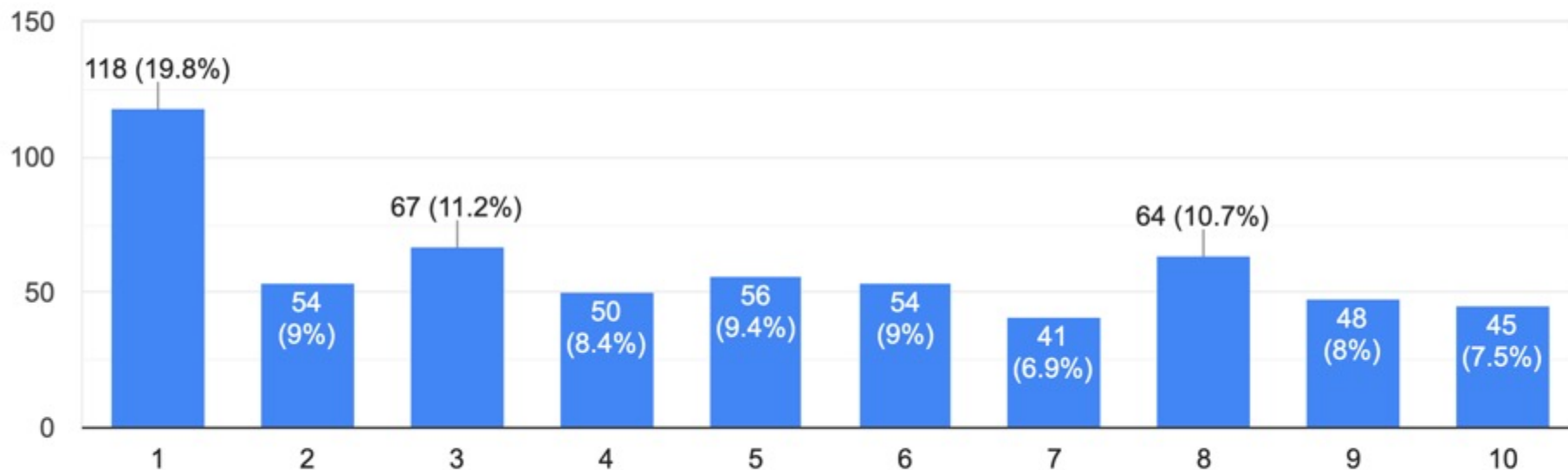
***Only 7% of outages last more than 1 day***

# Online Survey – Pulaski County

© All Rights Reserved 2021

11. Generally, how satisfied are you with your Internet service (1 being "Completely Dissatisfied and 10 being "Very Satisfied")?

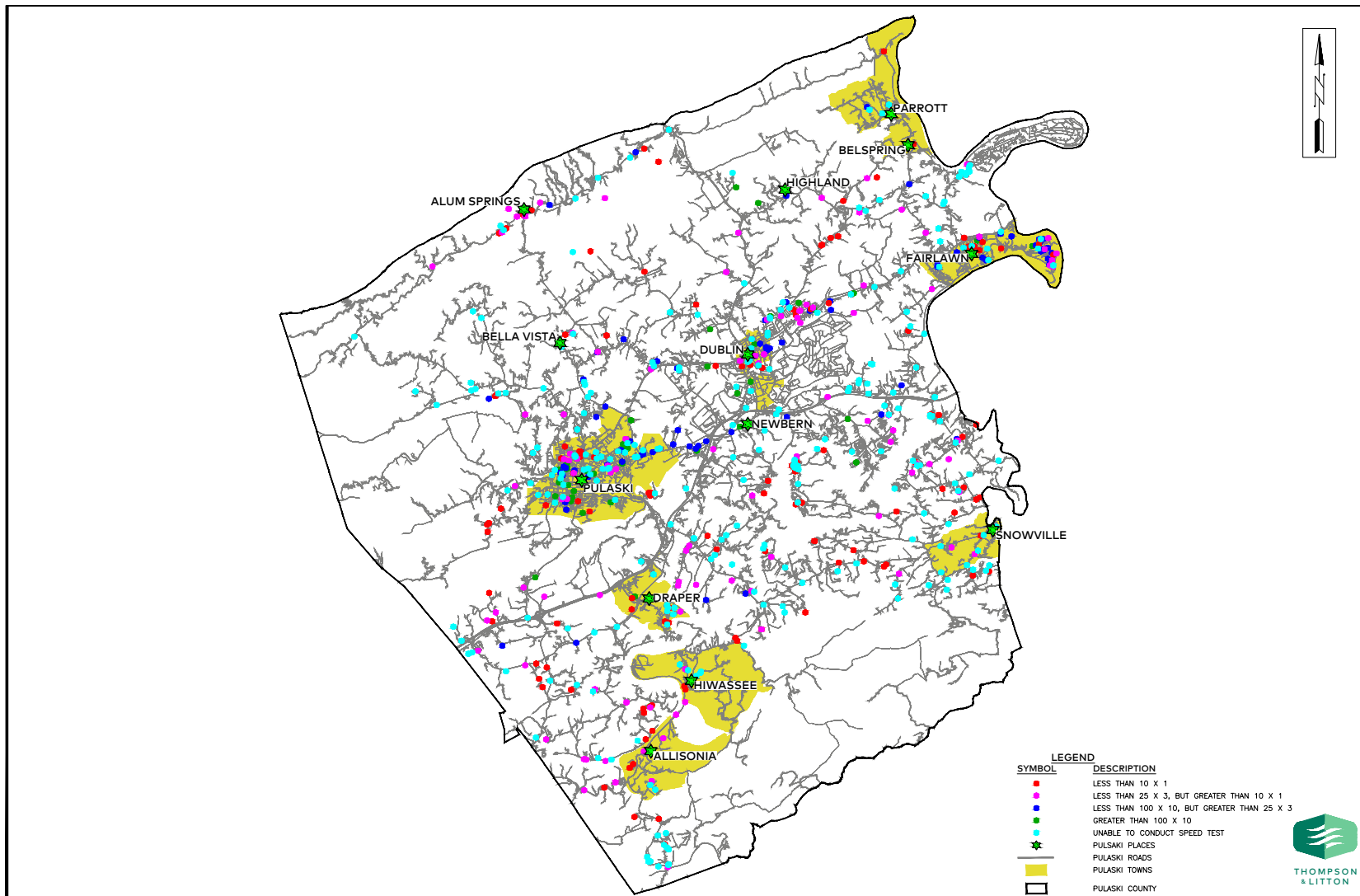
597 responses



***58% fall at or below the mid range of general satisfaction***

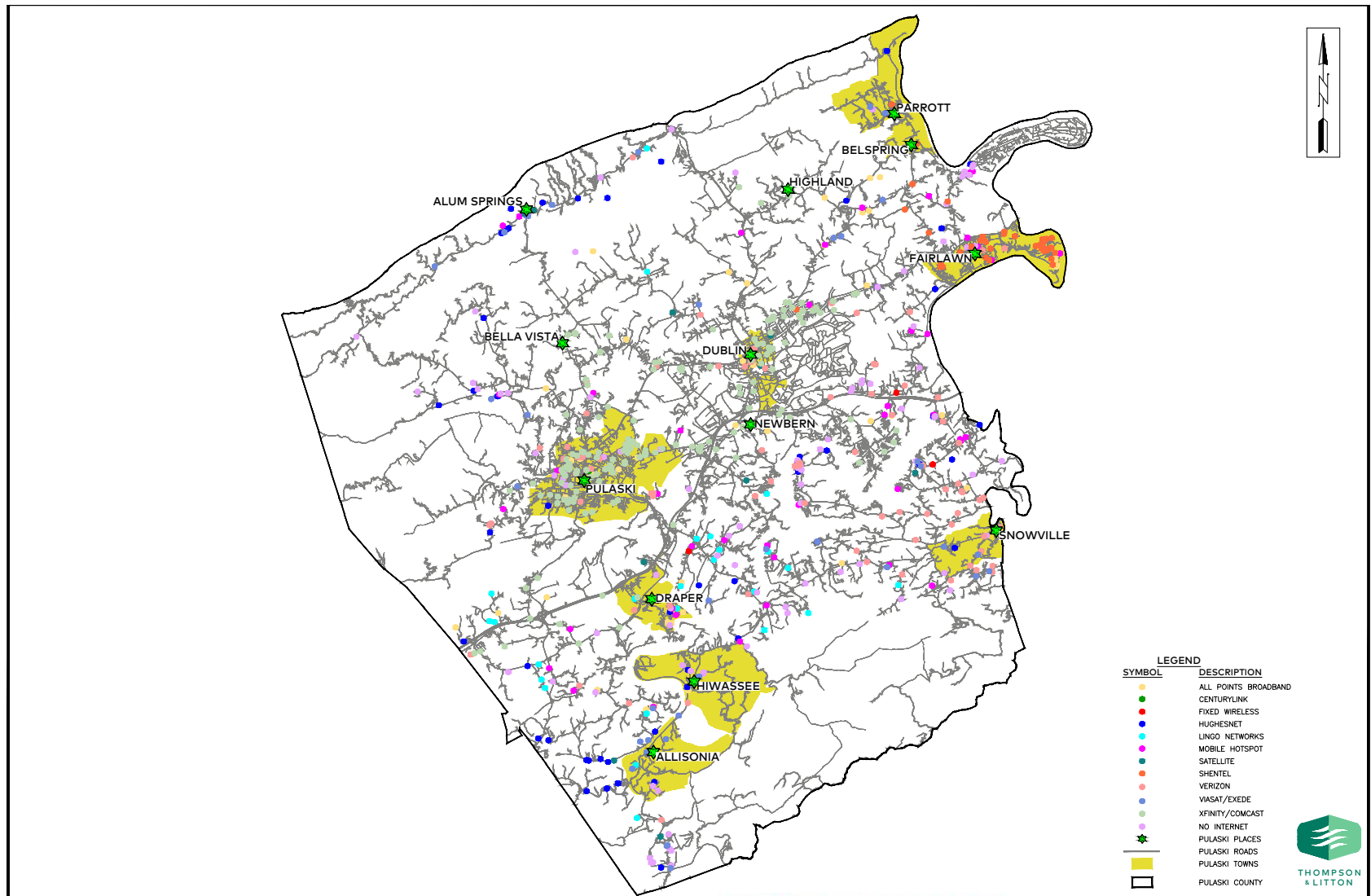
# Pulaski County Survey – By Speed

© All Rights Reserved 2021



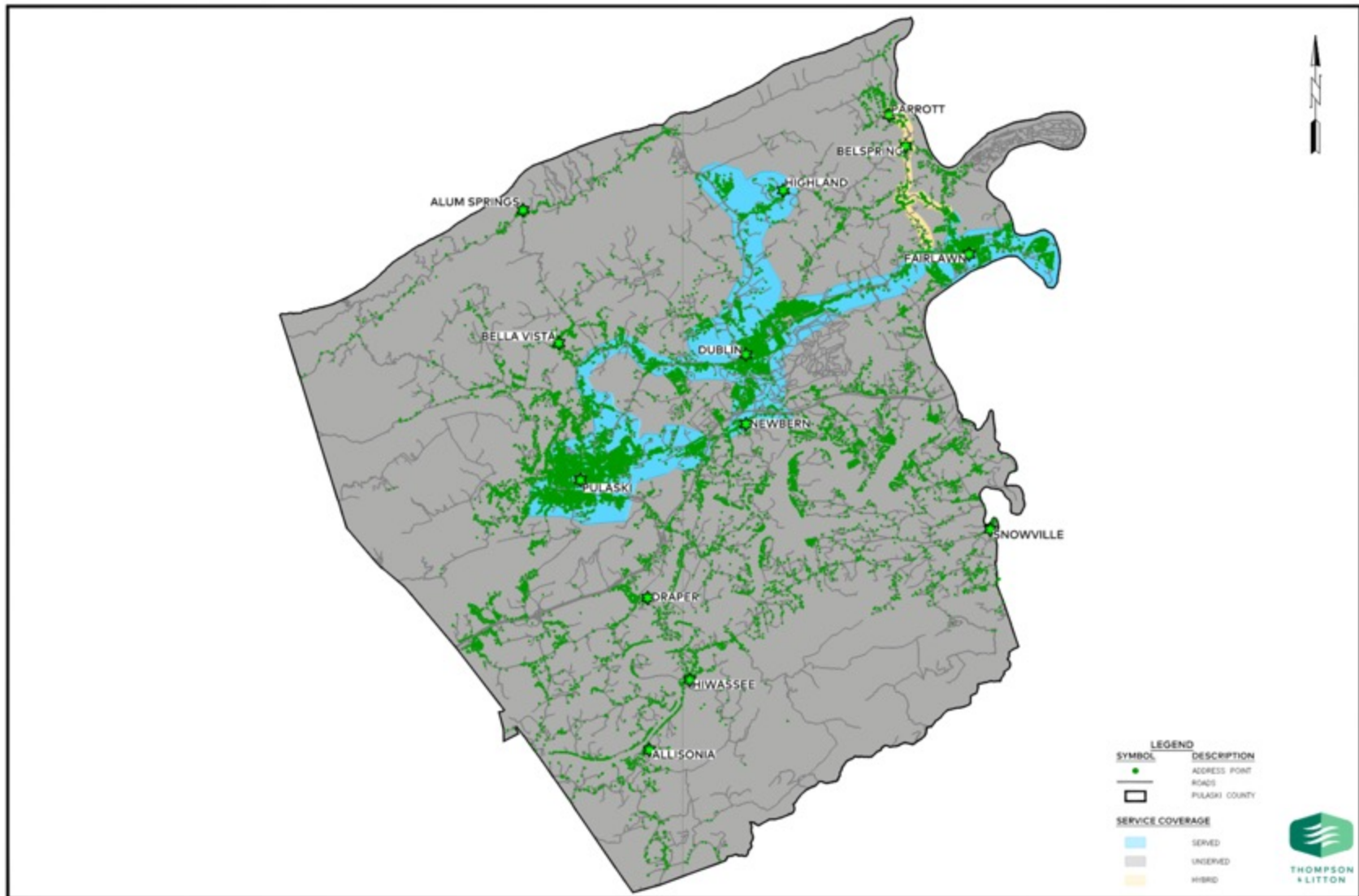
# Pulaski County Survey – By Provider

© All Rights Reserved 2021



# Pulaski County Survey – By Service

© All Rights Reserved 2021



# Hybrid Areas – Pulaski County

© All Rights Reserved 2021

Belspring Road Area



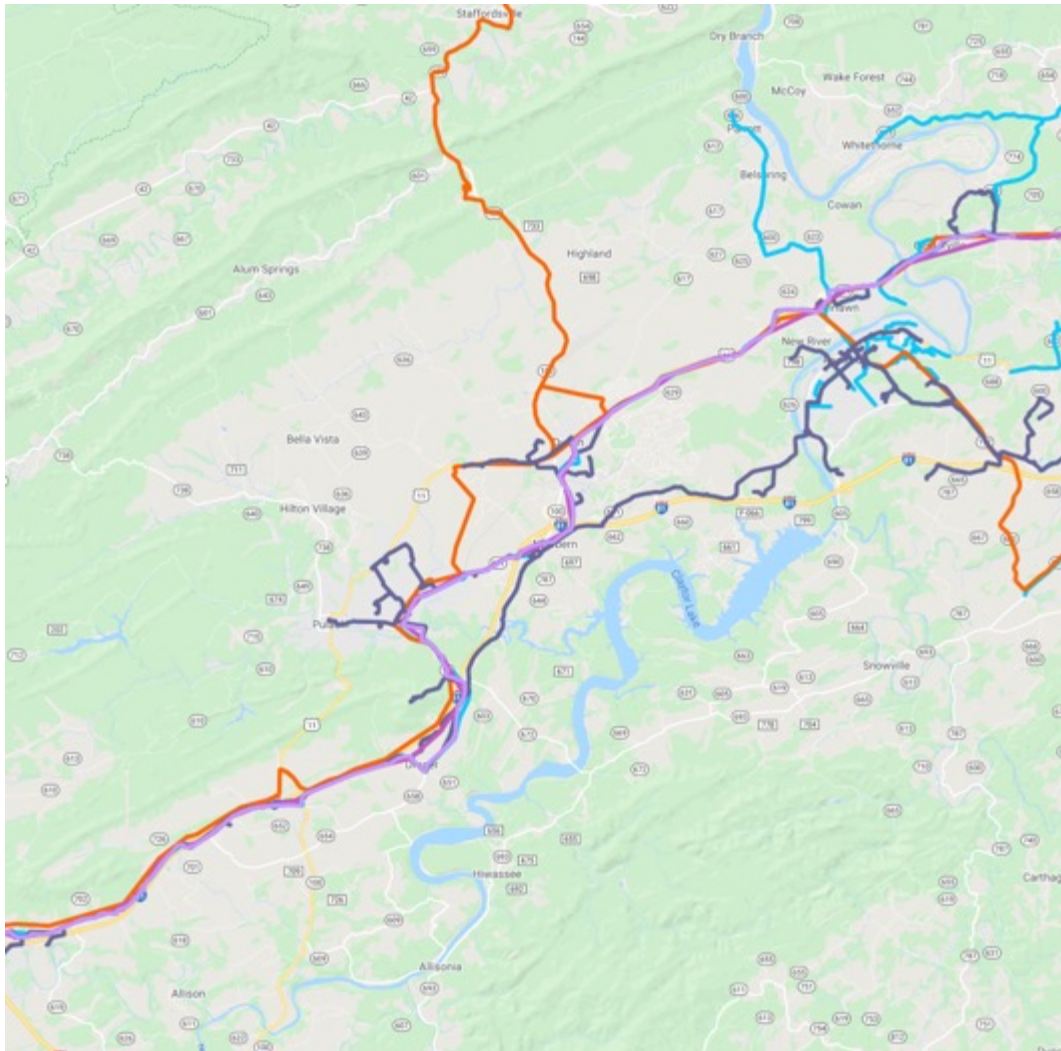
Parrott












# Pulaski County Fiber

© All Rights Reserved 2021



-  Level3 Metro
-  LIT Networks
-  Mid-Atlantic Broadband
-  Point Broadband
-  Segra
-  Shentel
-  Windstream

# Pulaski County Infrastructure Assessment

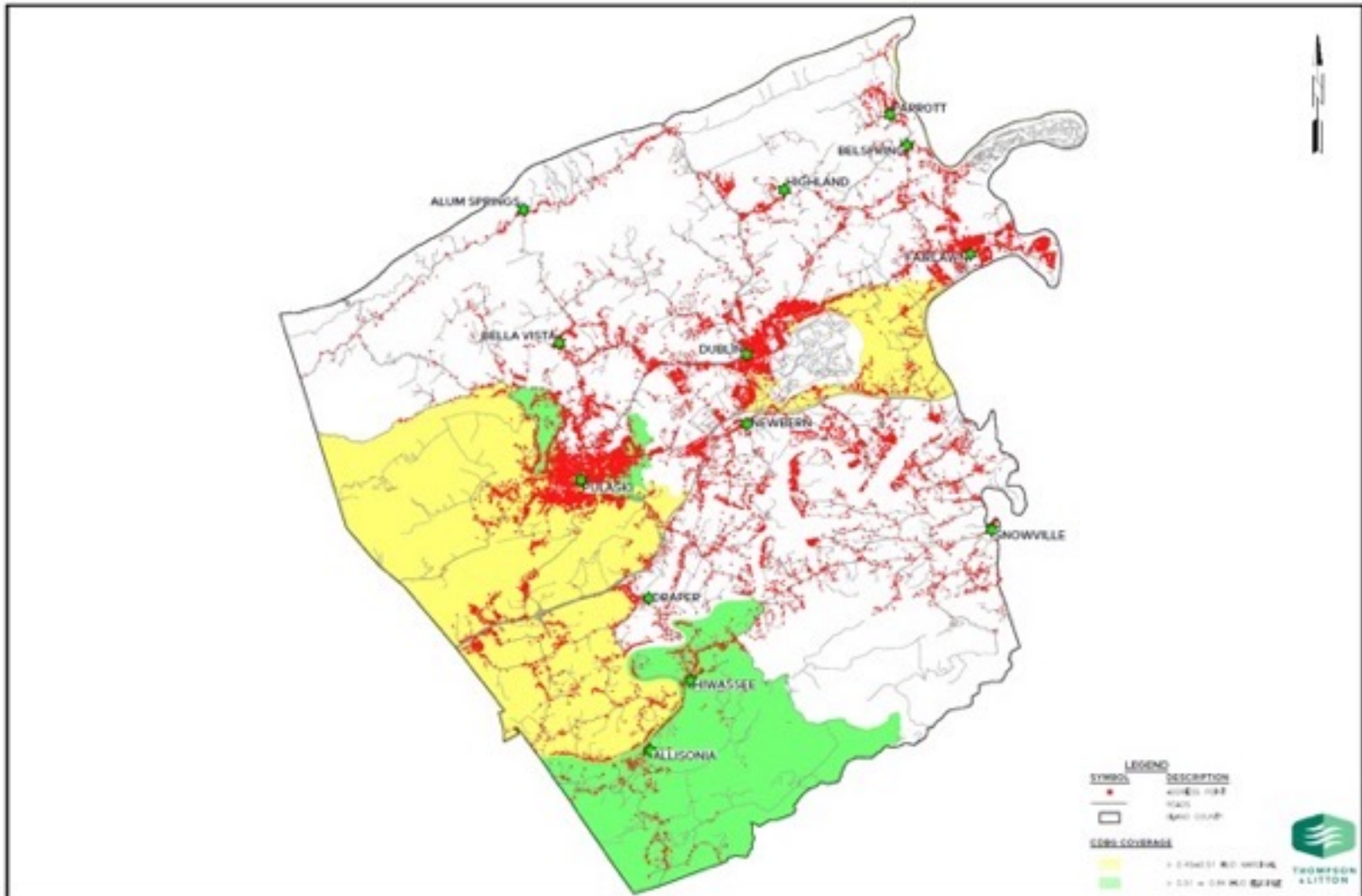
© All Rights Reserved 2021

- Existing Broadband Infrastructure
  - I-81/Rt 11 Corridor (Fairlawn, Dublin, Pulaski)
    - Segra, Shentel, Windstream, LIT Network, Point Broadband
  - Rt. 100 (from Giles County to Dublin)
    - LIT Networks
  - Shentel
    - Parrott/Belspring area
  - DSL/Satellite Service
    - CenturyLink, Verizon, HughesNet



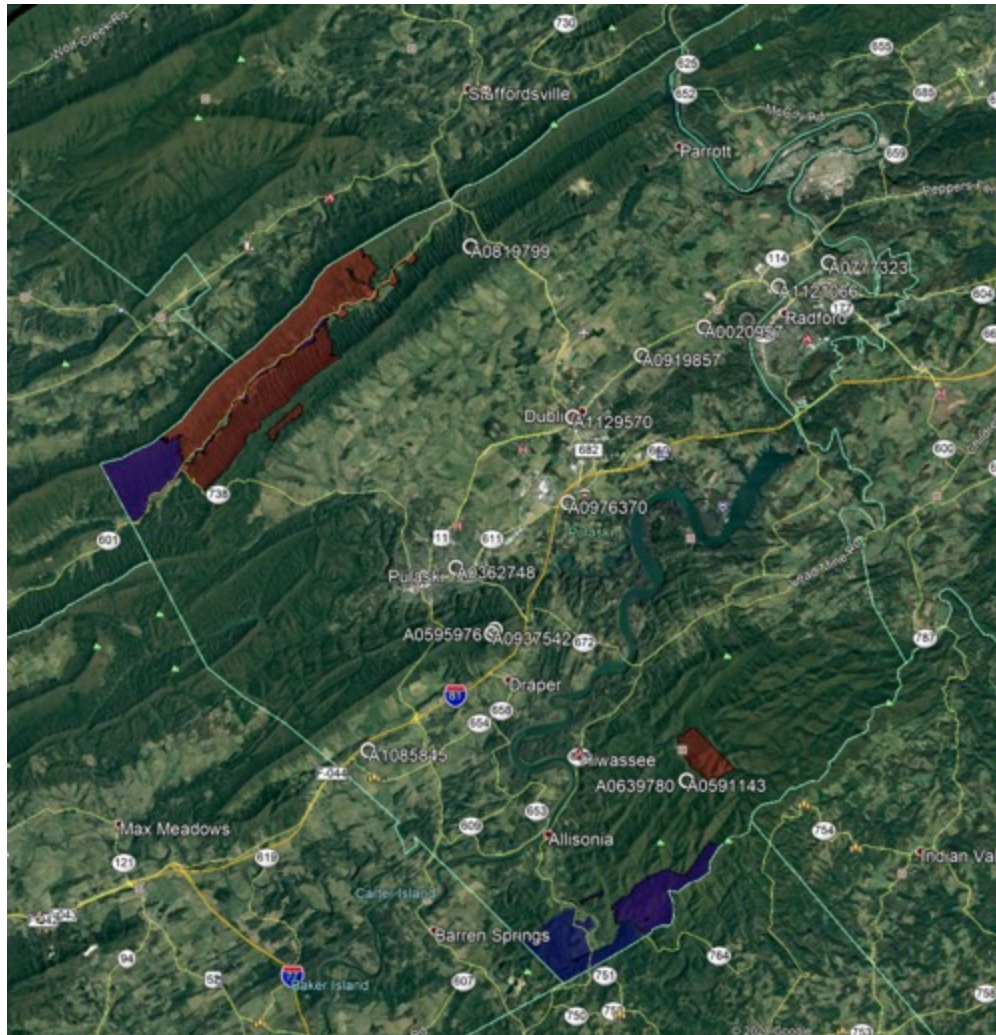
# Pulaski County CDBG HUD Map

© All Rights Reserved 2021



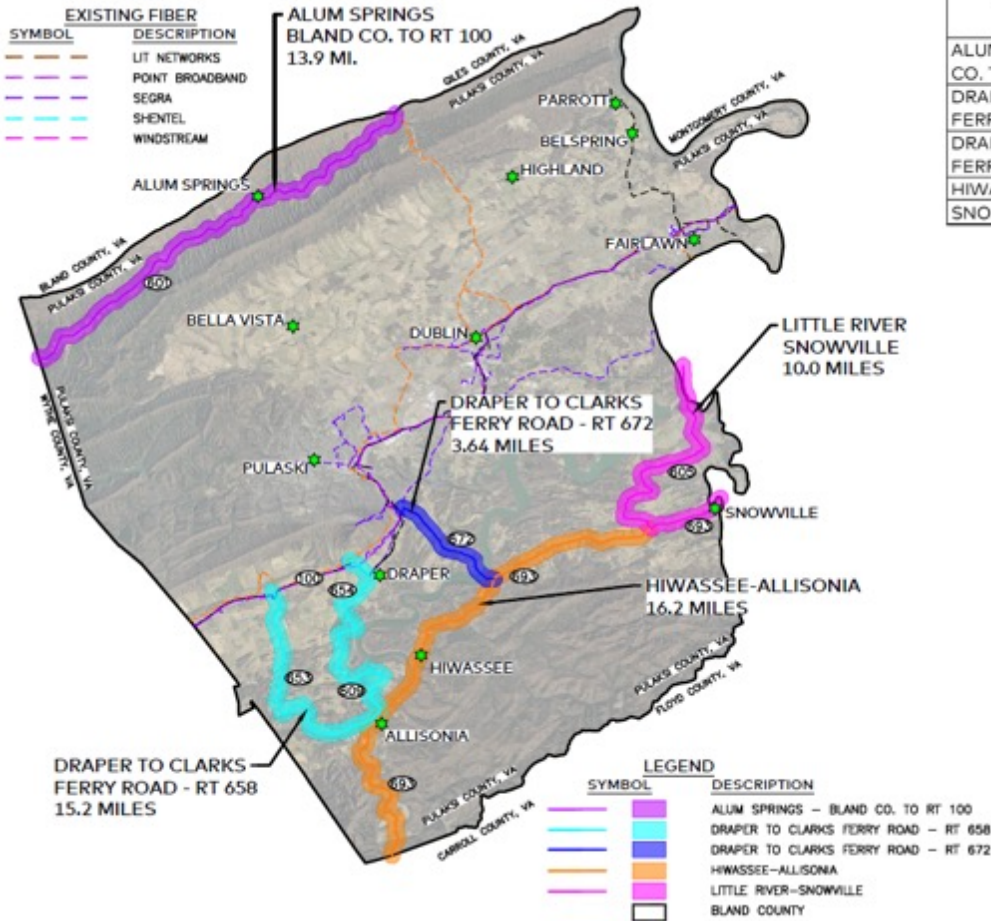
# Pulaski County CAFII/RDOF Map

© All Rights Reserved 2021



# Pulaski County Proposed Project Map

© All Rights Reserved 2021



PROJECT AREA	HUD MARGINAL HOUSES	HUD ELIGIBLE	NON-CDBG HOUSES IN PROJECT AREA	TOTAL HOUSES
ALUM SPRINGS - BLAND CO. TO RT 100	---	---	209	209
DRAPER TO CLARKS FERRY ROAD - RT 658	287	19	110	416
DRAPER TO CLARKS FERRY ROAD - RT 672	---	3	107	110
HIWASSEE-ALLISONIA	39	317	159	476
SNOWVILLE	---	---	191	191

# Pulaski County Proposed Project Costs

© All Rights Reserved 2021

PROPOSED BROADBAND PROJECTS					
County	Community	Length (miles)	EST Number of Households/ Connections	Estimated Project Costs	
				Aerial	
				Preliminary Statement of Probable Project Cost - Aerial (See Project Cost Estimates)	Aerial Cost per Connection
Pulaski	RT 601 - Alum Springs	13.9	209	\$1,379,140	\$6,599
Pulaski	RT 100/654/658 - Draper to Clarks Ferry Road	15.2	416	\$1,678,418	\$4,035
Pulaski	RT 693 - Hiwassee/Allisonia	19.8	476	\$2,155,792	\$4,529
Pulaski	RT 693/605 - Snowville/Little River	10.0	191	\$1,088,769	\$5,700
		58.9	1292	\$6,302,119	

# Summary and Recommendations



# Summary of Service Levels by County

© All Rights Reserved 2021

<b>Bland County</b>	<b>Count</b>	<b>Percent of Total</b>
Served	62	12%
Unserved	465	88%
<b>Total Survey Responses</b>	<b>527</b>	
<b>Pulaski County</b>	<b>Count</b>	<b>Percent of Total</b>
Served	194	31%
Unserved	422	69%
<b>Total Survey Responses</b>	<b>616</b>	

# Recommendations – Bland County

© All Rights Reserved 2021

- Seek funding
- In partnership with AEP, build two primary fiber routes to ensure adequate infrastructure to connect with existing fiber networks and to build the framework for addressing nearby unserved and underserved communities
  - AEP Project Routes
    - Rt. 42 Corridor (Smyth Co. to Giles Co.)
    - Rt. 61 (Tazewell Co. Line to Rocky Gap) & Rt. 606 Wilderness Rd. (I-77 to Rt. 42)
  - County CDBG Project Routes
    - Rt. 61 (Tazewell Co. Line to Rocky Gap)
    - Rt. 614 – Grapefield (Tazewell Co. Line to Rt. 52)
- Explore partnership opportunities with ongoing broadband initiatives and service providers

# Recommendations – Pulaski County

© All Rights Reserved 2021

- Seek funding
- In partnership with AEP, build two primary fiber routes (Rt. 693/605 Corridor and Rt. 601 Corridor) to ensure adequate infrastructure to connect with existing fiber networks and to build the framework for addressing nearby unserved and underserved communities
  - AEP Project Routes
    - Rt. 693 - Hiwassee/Allisonia & Rt. 693/605 - Snowville/Little River
    - Rt. 601 – Alum Springs (Bland Co. Line to Rt. 100)
  - County CDBG Project Routes
    - Rt. 100/654/658 - Draper to Clarks Ferry Road
    - Rt. 693 - Hiwassee/Allisonia
- Explore partnership opportunities with ongoing broadband initiatives and service providers.



# **Supplemental Broadband Study Montgomery County, Virginia**

## **Final Report**

**April 12, 2021**

**Updated June 29, 2021**





Review Project Objectives & Scope of Work



Online Survey Data Response Results



Maps & Proposed Network Route



## Objectives

To accurately identify the unserved, underserved, and served communities in Montgomery County



## Scope of Work

Generate an online survey to supplement the existing data from 2019 effort

Prepare new maps based on the updated data



## Timeline

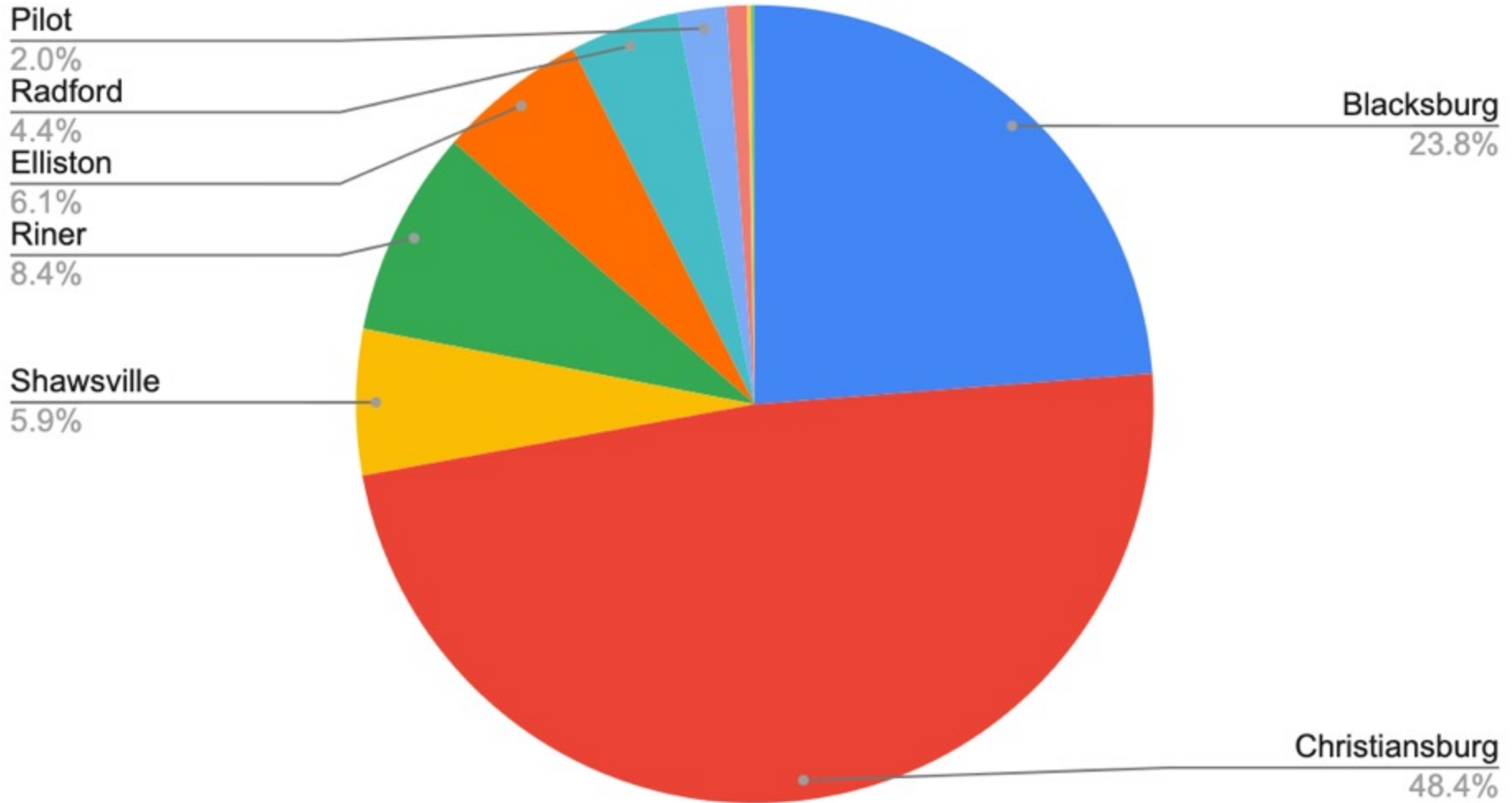
Schedule estimated at 60-90 days (depending on duration of online survey)

On schedule

Households	Response Rate	Survey Responses	No. of Invalid or Duplicate Responses	Mappable Responses
36,244	2%	674	64	610

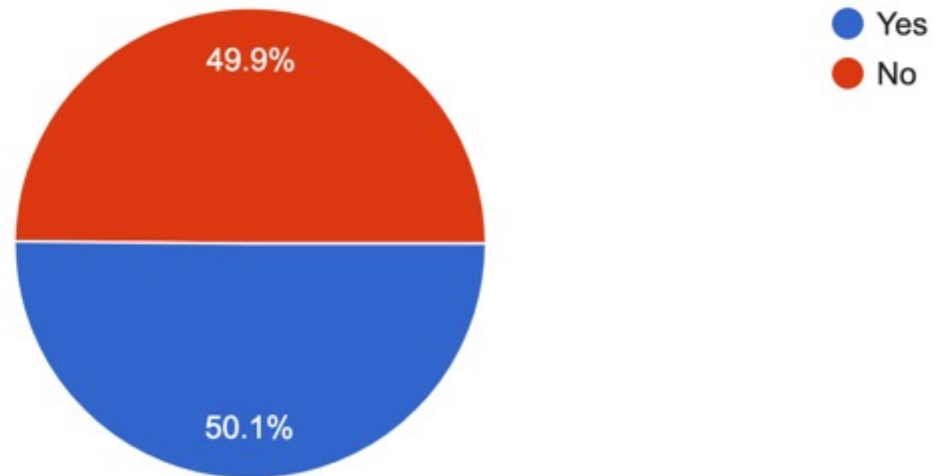
# Online Survey

## Response Locations



2. Is there a student currently living at this address?

674 responses

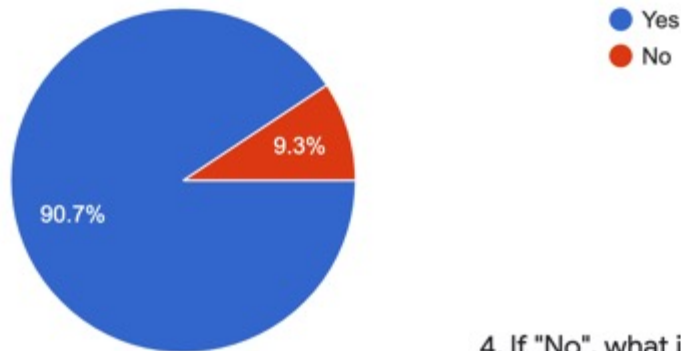


***Half of respondents have students living at home***

# Online Survey

3. Do you currently have Internet service at this address?

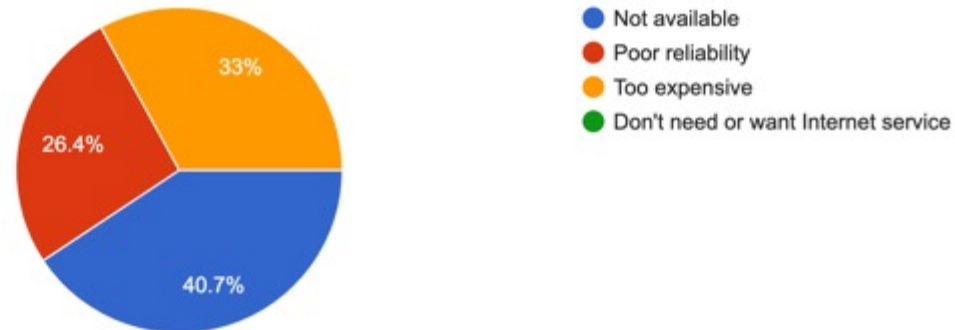
674 responses



***9% have no Internet service***

4. If "No", what is the main reason why you do not have Internet service at this address?

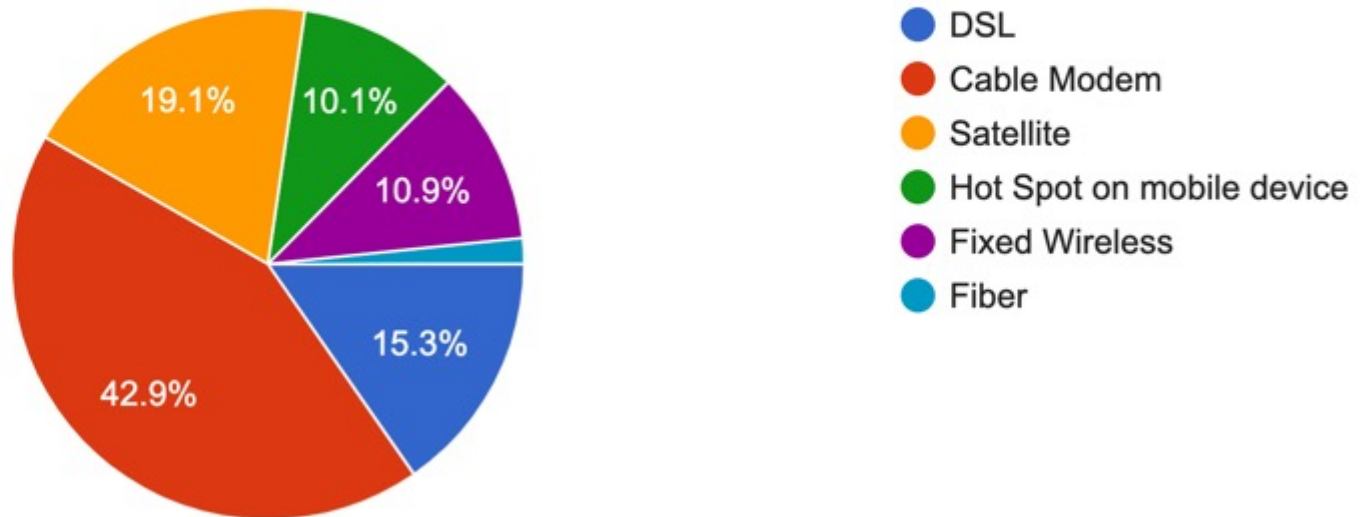
91 responses



***Availability is the biggest factor, followed by affordability***

## 5. If "Yes", what type of Internet service do you have?

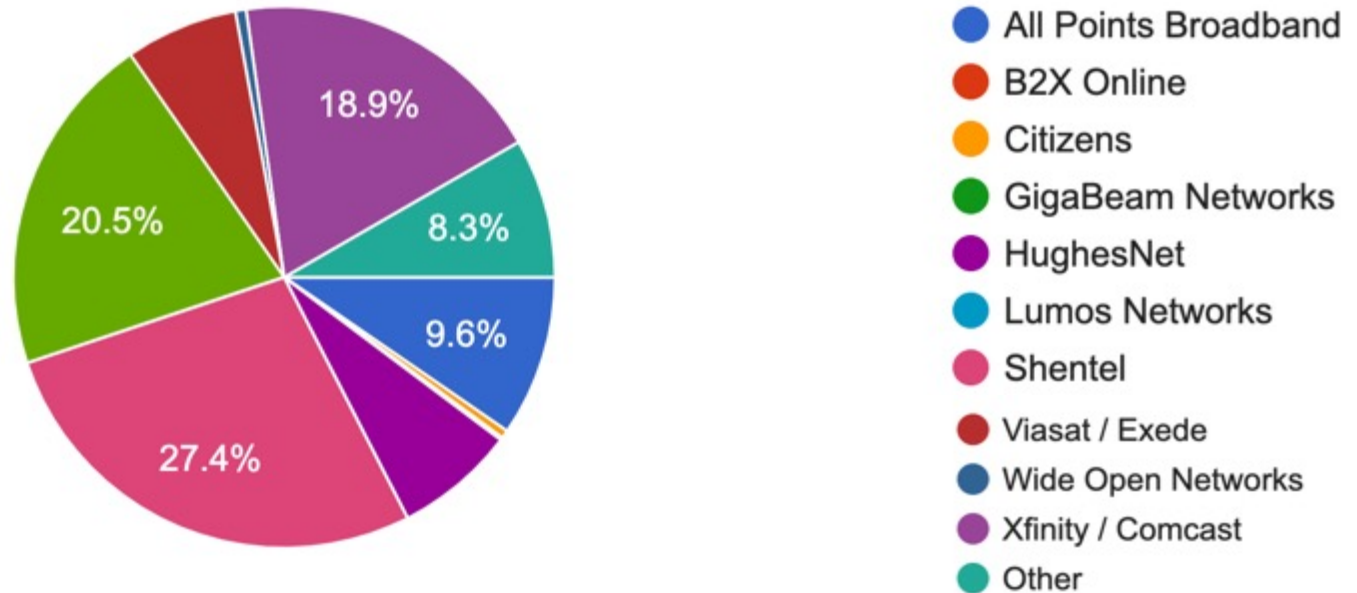
613 responses



***44% have DSL, Satellite, or Hot Spot -- considered unserved***

## 6. Who is your Internet service provider?

624 responses



***42% use DSL or Satellite or "Other" -- considered unserved***



7. What is the approximate speed of your household's Internet service? If you are not sure, go to [www.speedtest.net](http://www.speedtest.net) from your home laptop or computer.

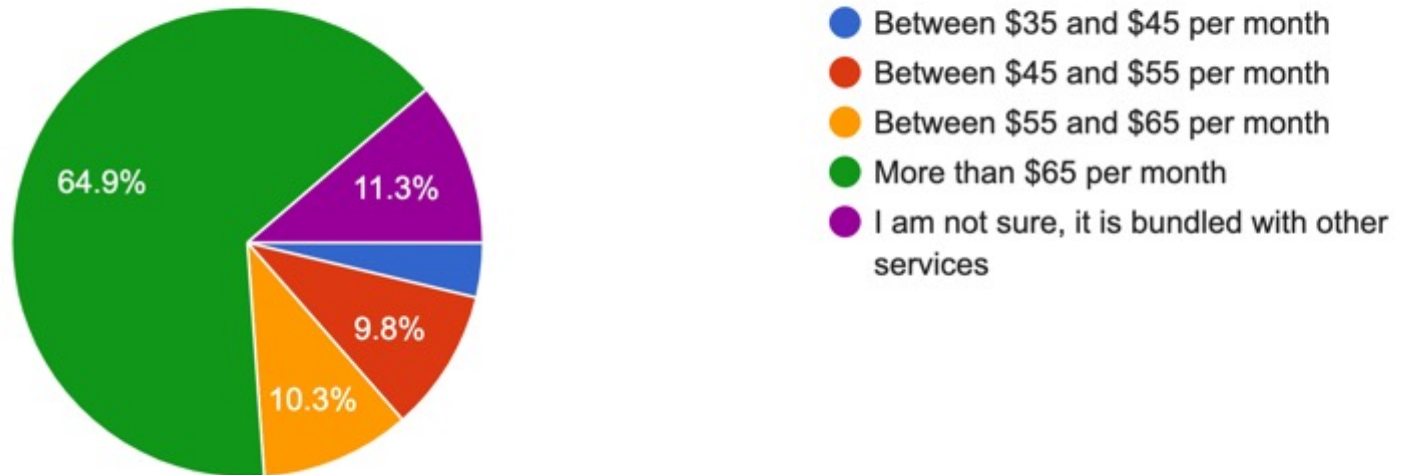
674 responses



***46% report speeds of less than 25 x 3 -- considered unserved***

## 8. How much do you pay monthly for Internet service?

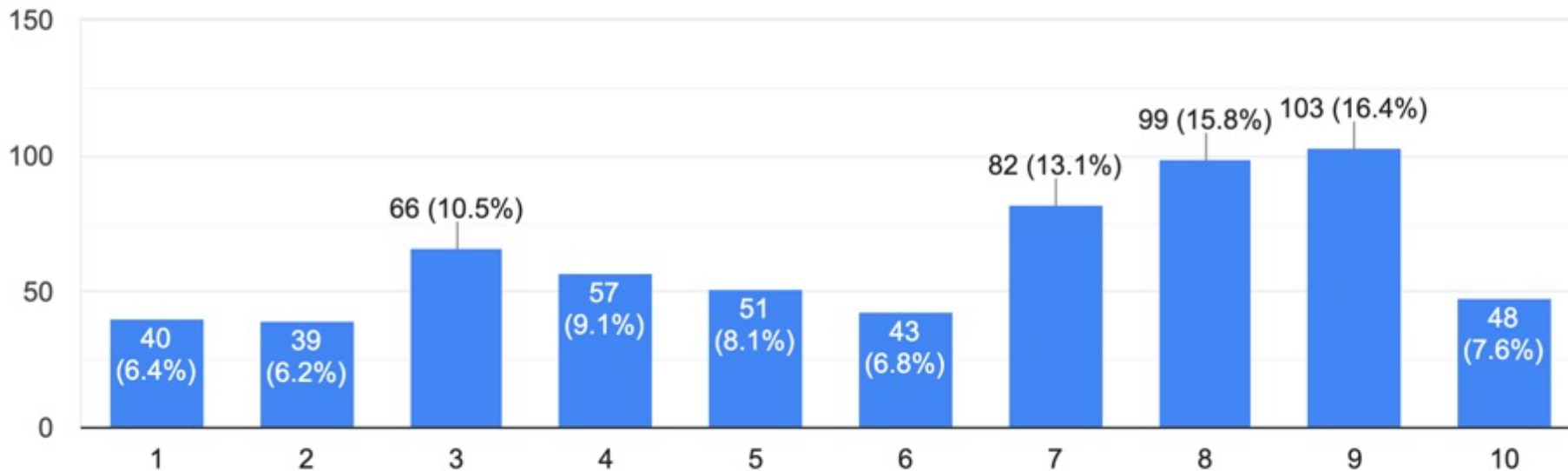
612 responses



***65% pay on the higher end***

9. How reliable is your Internet service (1 being "Completely Unreliable and 10 being "Very Reliable")?

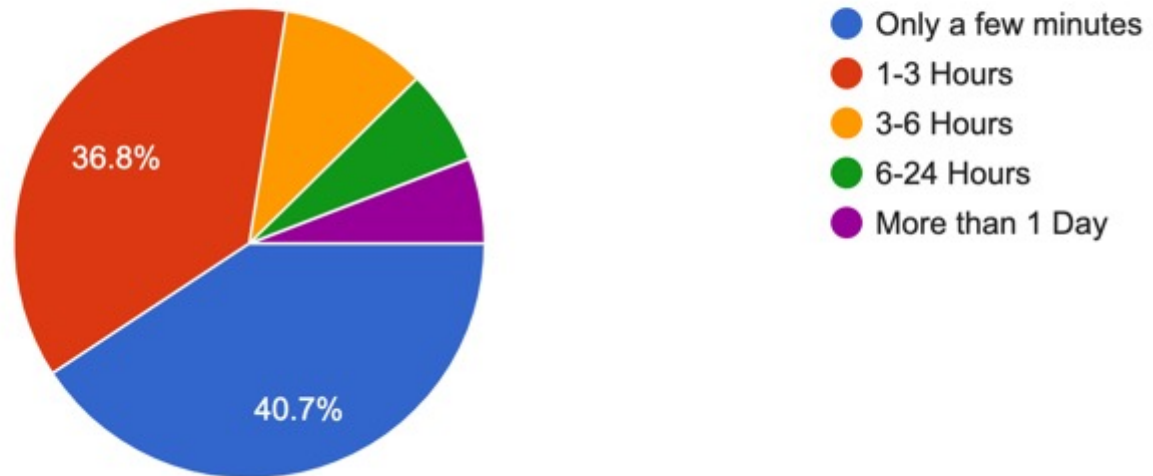
628 responses



***68% fall at or above the mid range of reliability***

10. On average, how long does a typical Internet service outage last?

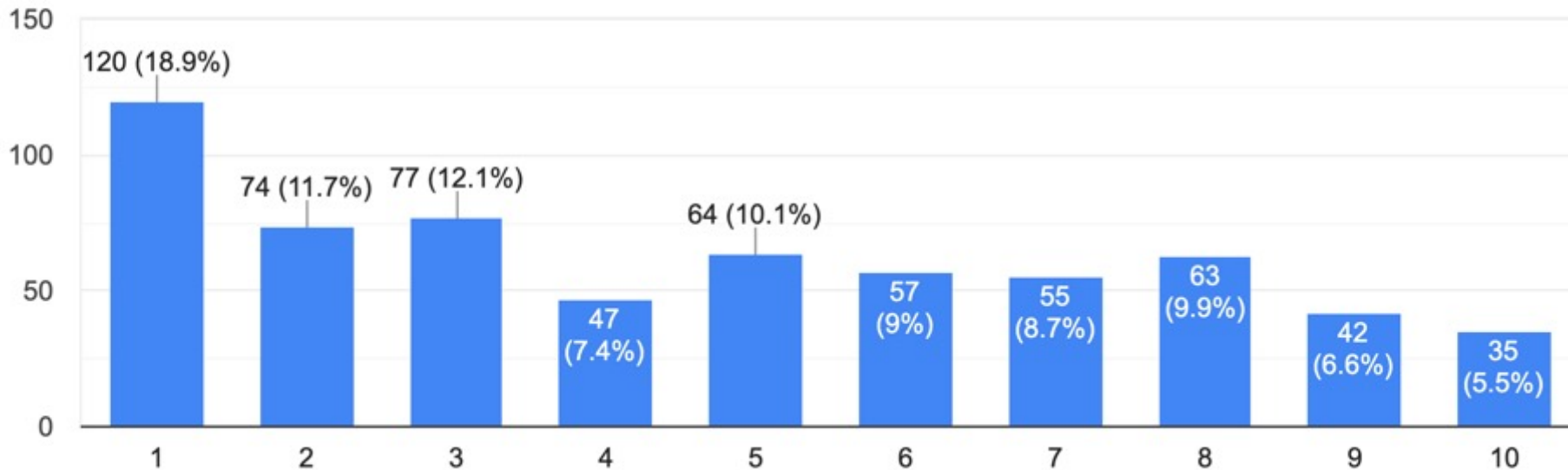
614 responses



***Only 6% reported outages lasting more than 1 day***

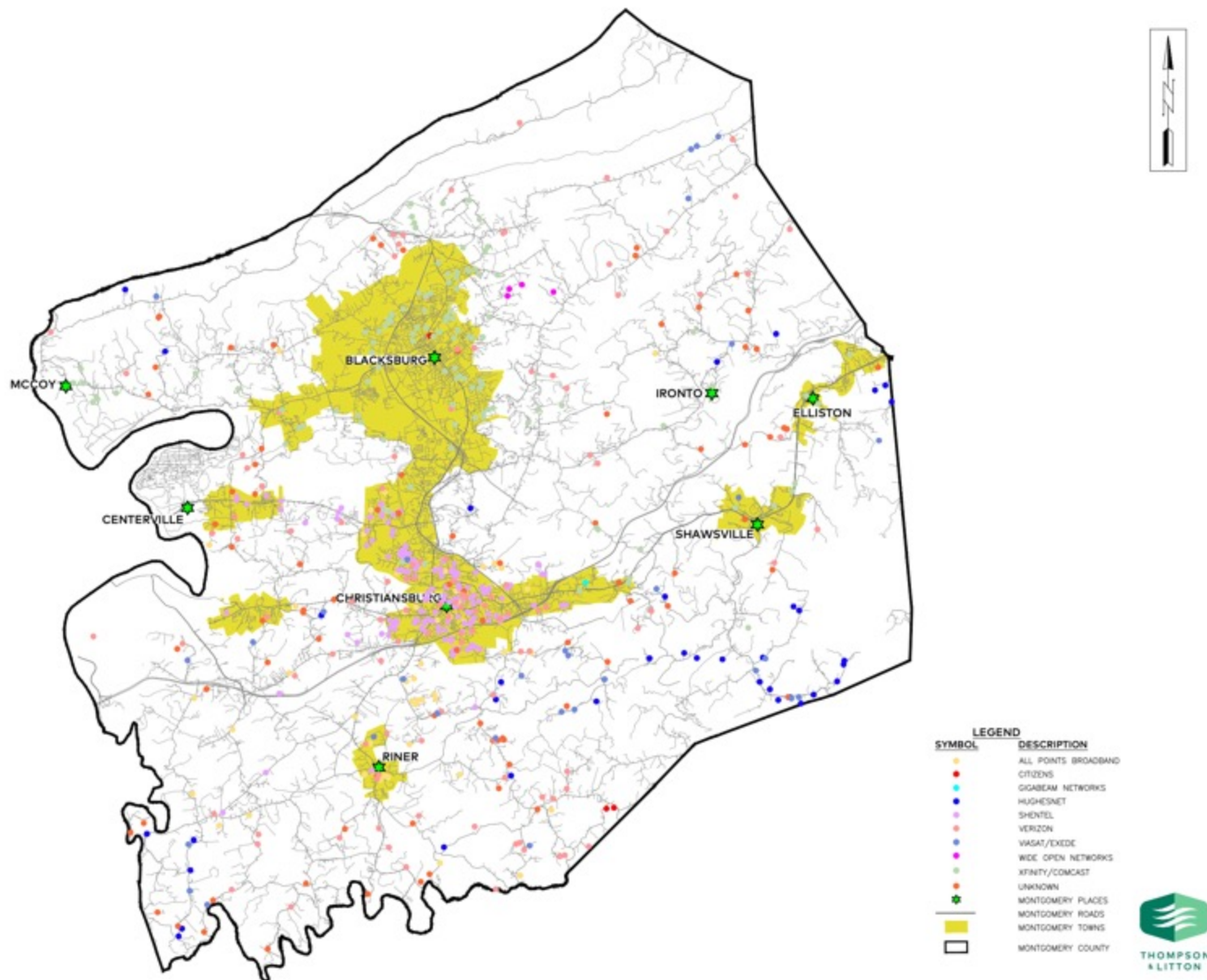
11. Generally, how satisfied are you with your Internet service (1 being "Completely Dissatisfied and 10 being "Very Satisfied")?

634 responses



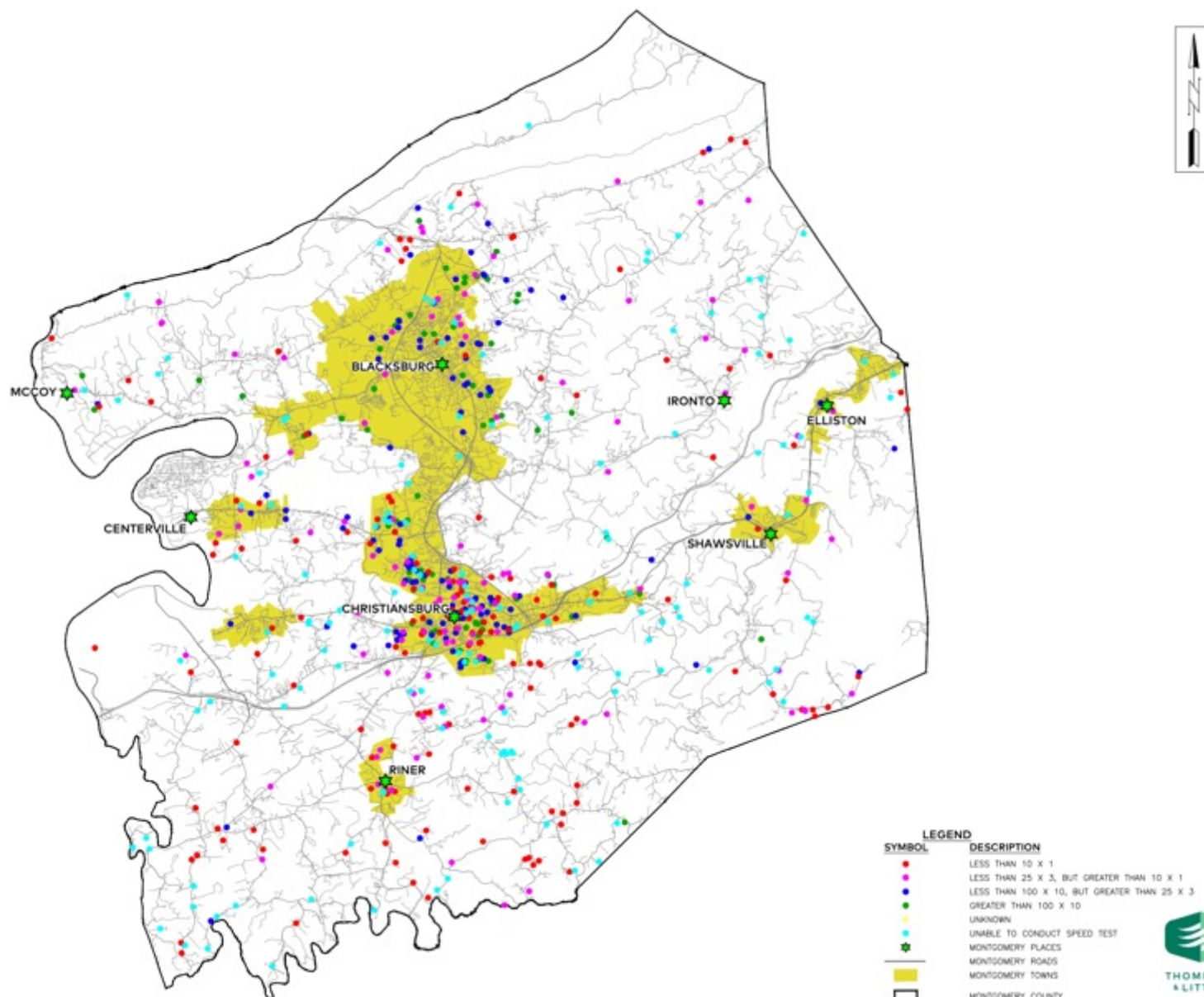
***60% fall at or below the mid range of general satisfaction***

# Provider Map

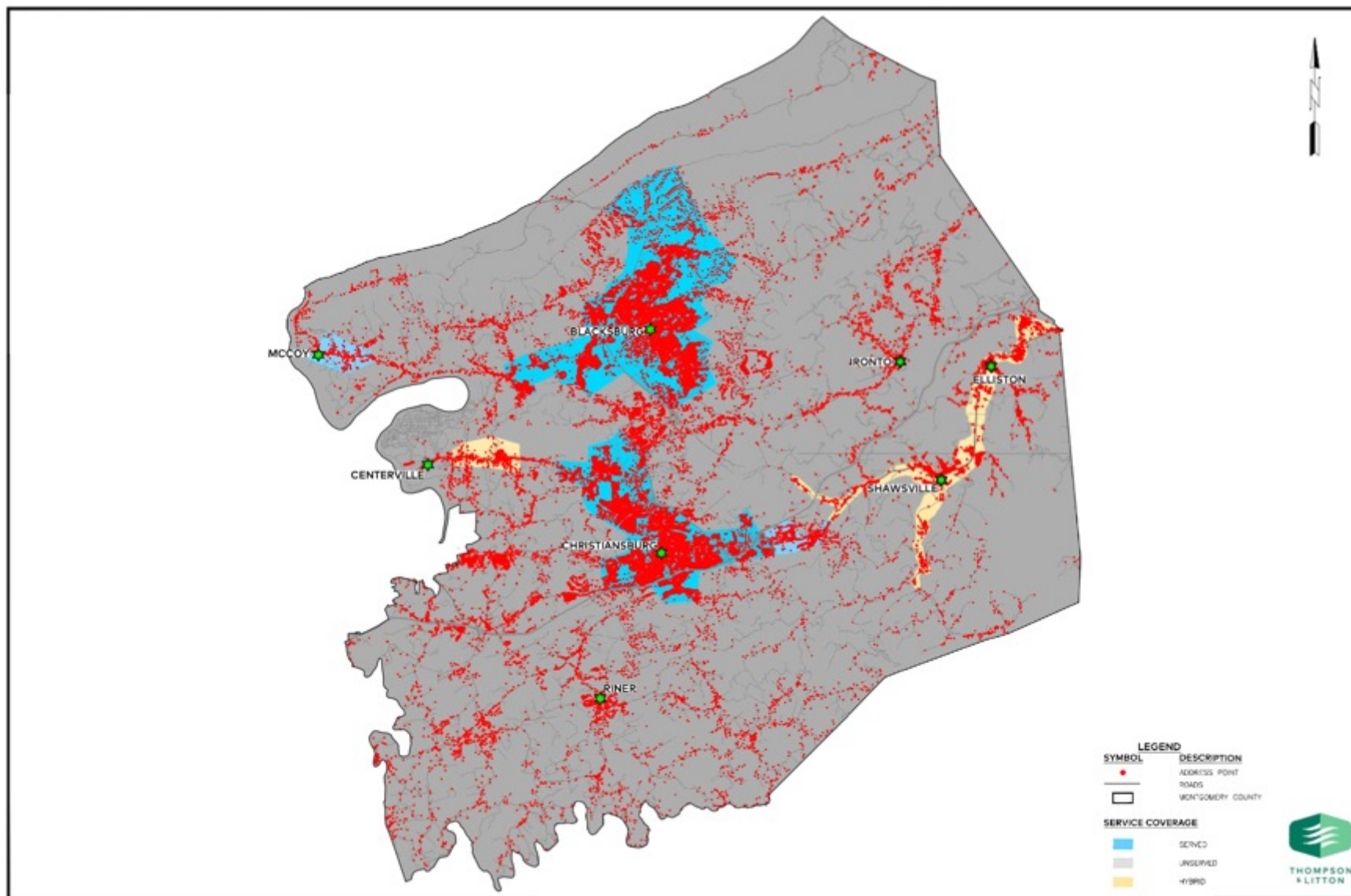




# Speed Map



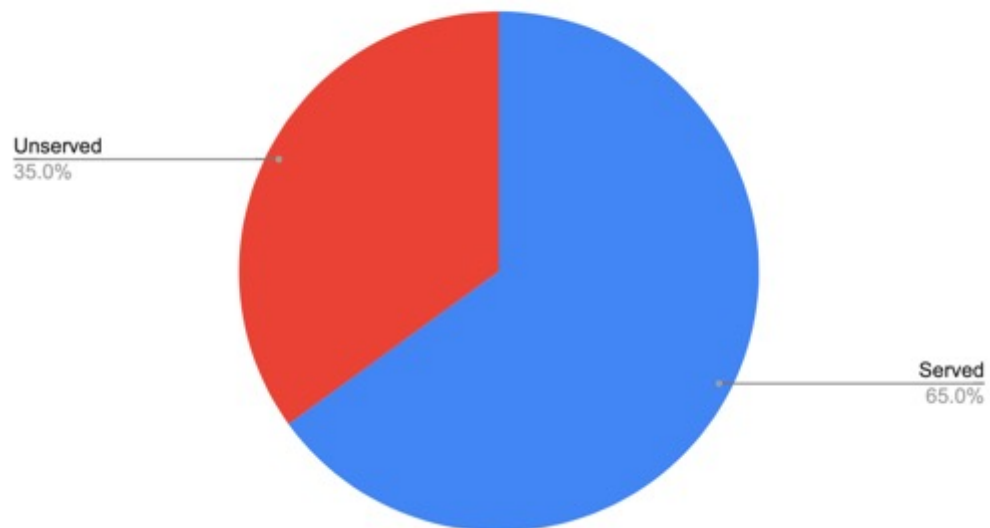
# Shaded Map



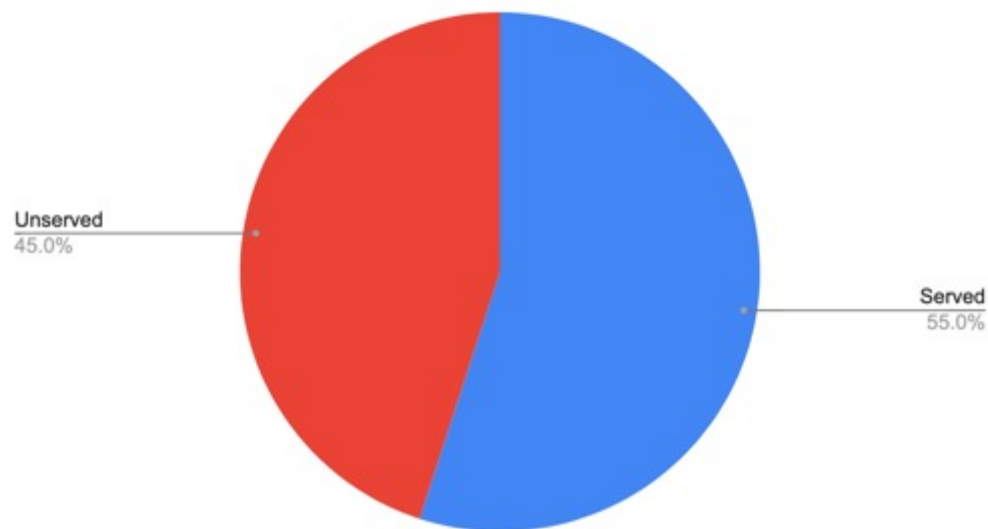


# Hybrid Areas

**Shawsville**



**Centerville**

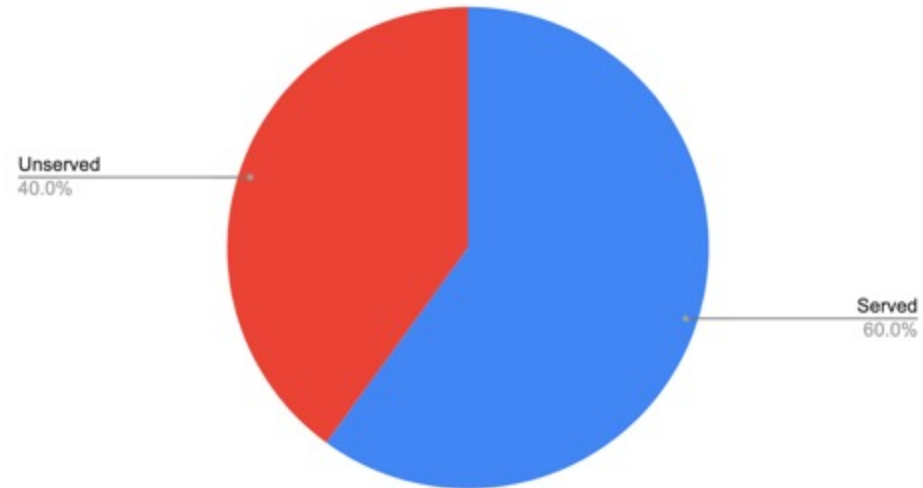


# Hybrid Areas

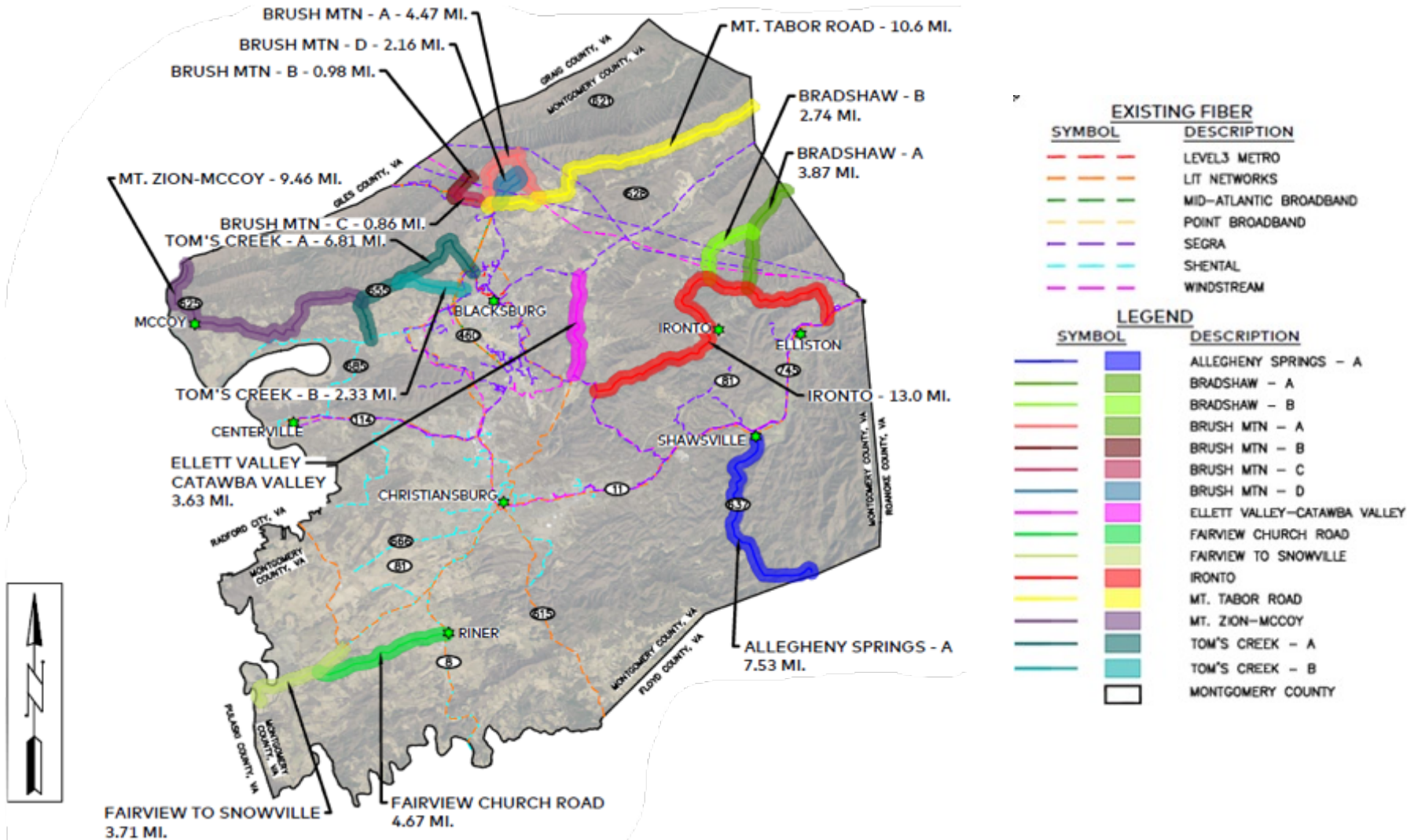
Elliston / Lafayette Area



Allegheny Springs / Den Hill Road Area

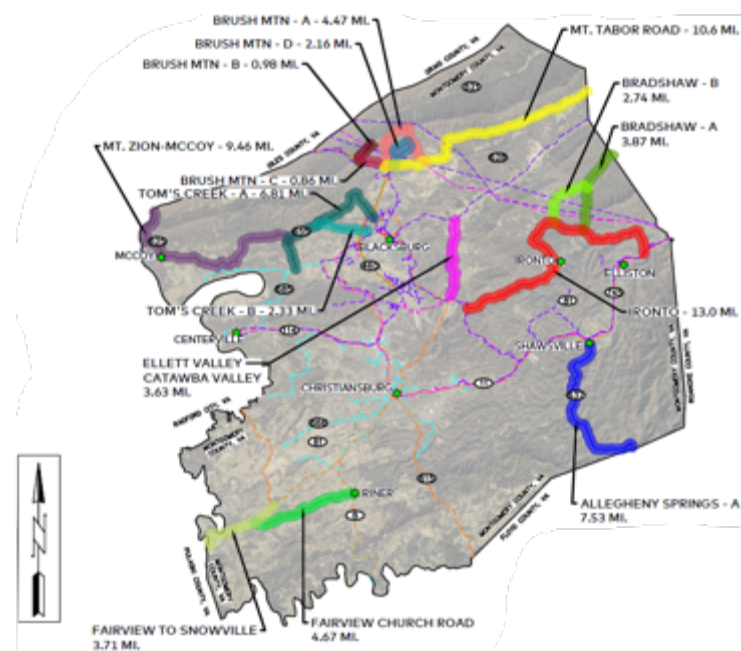


# Proposed Network Route



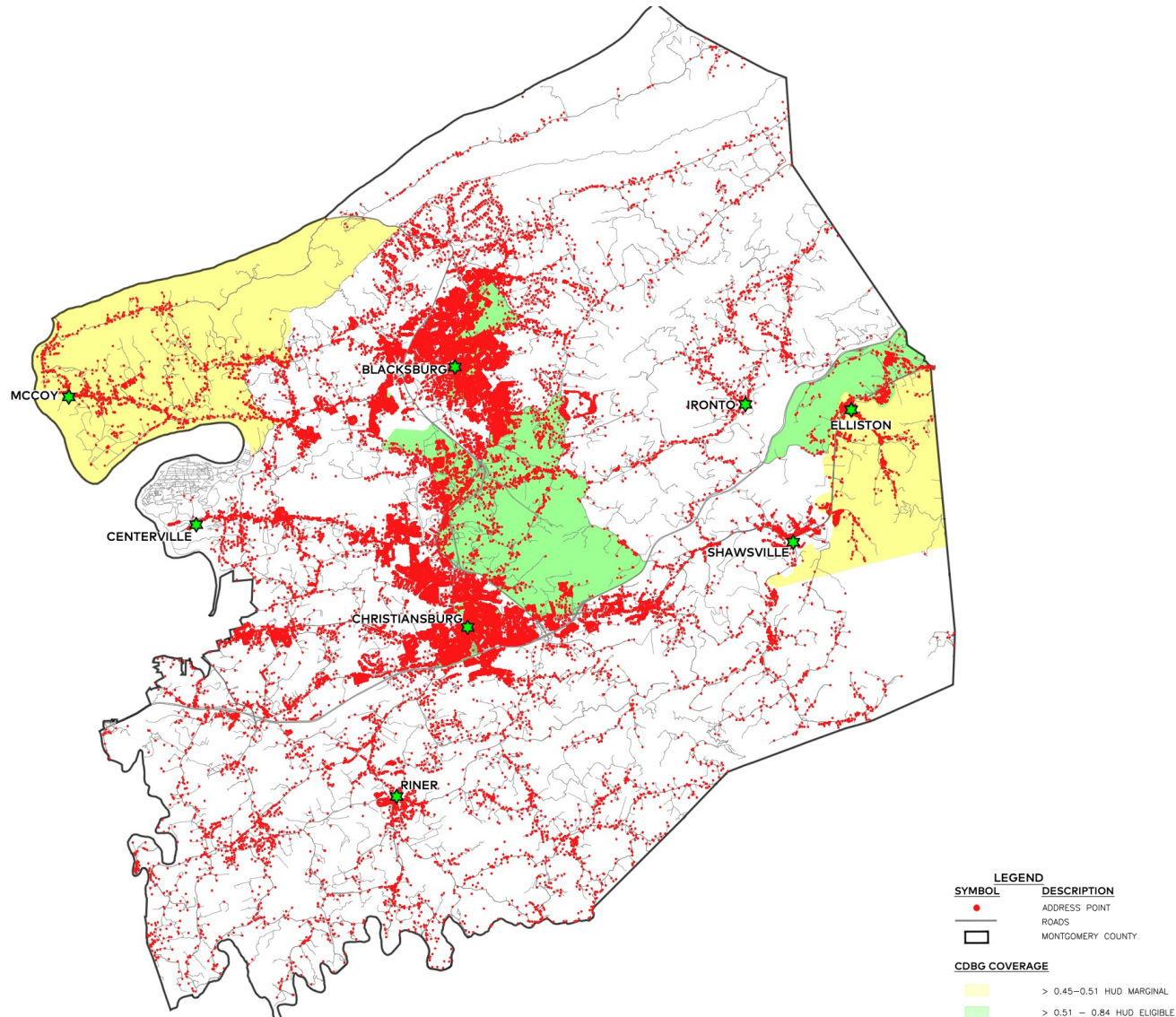
# Proposed Network Route

PROJECT AREA	HUD MARGINAL HOUSES	HUD ELIGIBLE	NON-CDBG HOUSES IN PROJECT AREA	TOTAL HOUSES
ALLEGHENY SPRINGS - A	1	---	307	307
BRADSHAW - A	---	---	133	133
BRADSHAW - B	---	---	113	113
BRUSH MTN - A	---	---	168	168
BRUSH MTN - B	1	---	50	51
BRUSH MTN - C	---	---	131	131
BRUSH MTN - D	---	---	77	77
ELLETT VALLEY-CATAWBA VALLEY	---	38	154	192
FAIRVIEW CHURCH ROAD	---	---	276	276
FAIRVIEW TO SNOWVILLE	---	---	138	138
IRONTO	---	228	338	566
MT. TABOR ROAD	---	---	277	277
MT. ZION-MCCOY	466	---	34	500
TOM'S CREEK - A	26	---	1527	1553
TOM'S CREEK - B	---	---	814	814





# CDBG Map



**Description of Proposed Project Area**Bland County

All areas of Bland County are part of the proposed project area with the exception of a small area in the northern section of the county near Rocky Gap, including the I-77 corridor to the north and a 7-mile area along Rd 613 extending east and west of I-77. With the exception of this Rocky Gap area, the entire County of Bland was found to be unserved by broadband and therefore eligible to be part of the proposed project area.

Pulaski County

The majority of Pulaski County, excluding the towns of Pulaski and Dublin, was found to be unserved by broadband. The Town of Pulaski, and areas to the east including Rte 11, E. Main St and Bob White Blvd. toward Dublin, have access to broadband speeds greater than 25/3 Mbps and are therefore excluded from the proposed project area. The Town of Dublin, including Cleburne Blvd to the north and south and Rte 11 east to the City of Radford, including a portion of the Fairlawn area near Peppers Ferry Blvd., have access to broadband speeds greater than 25/3 Mbps and are also excluded from the proposed project area. All other areas of the county were found to be unserved by broadband, including a pocket area between the towns of Pulaski and Dublin, and are therefore eligible to be included as part of the proposed project area.

Montgomery County

The majority of Montgomery County, outside of Blacksburg, Christiansburg and the area of McCoy, was found to be unserved by broadband. Areas within the Blacksburg area and along Prices Fork Rd to the west of Blacksburg have access to broadband speeds greater than 25/3 Mbps and are excluded from the proposed project area. Areas around Christiansburg west of Hwy 460 and south to I-

81 including S. Franklin St have access to broadband speeds greater than 25/3 Mbps and are not included in the proposed project area. The McCoy community in the northwest part of the county along 2 miles of McCoy Rd has access to broadband speeds greater than 25/3 Mbps and is also not included in the proposed project area. All other areas of Montgomery County, with the exception of these areas in Blacksburg, Christiansburg and McCoy, were found to be unserved by broadband and therefore are eligible for inclusion in the proposed project area.

City of Radford

The City of Radford surrounded by Pulaski and Montgomery County is not part of the proposed project area.